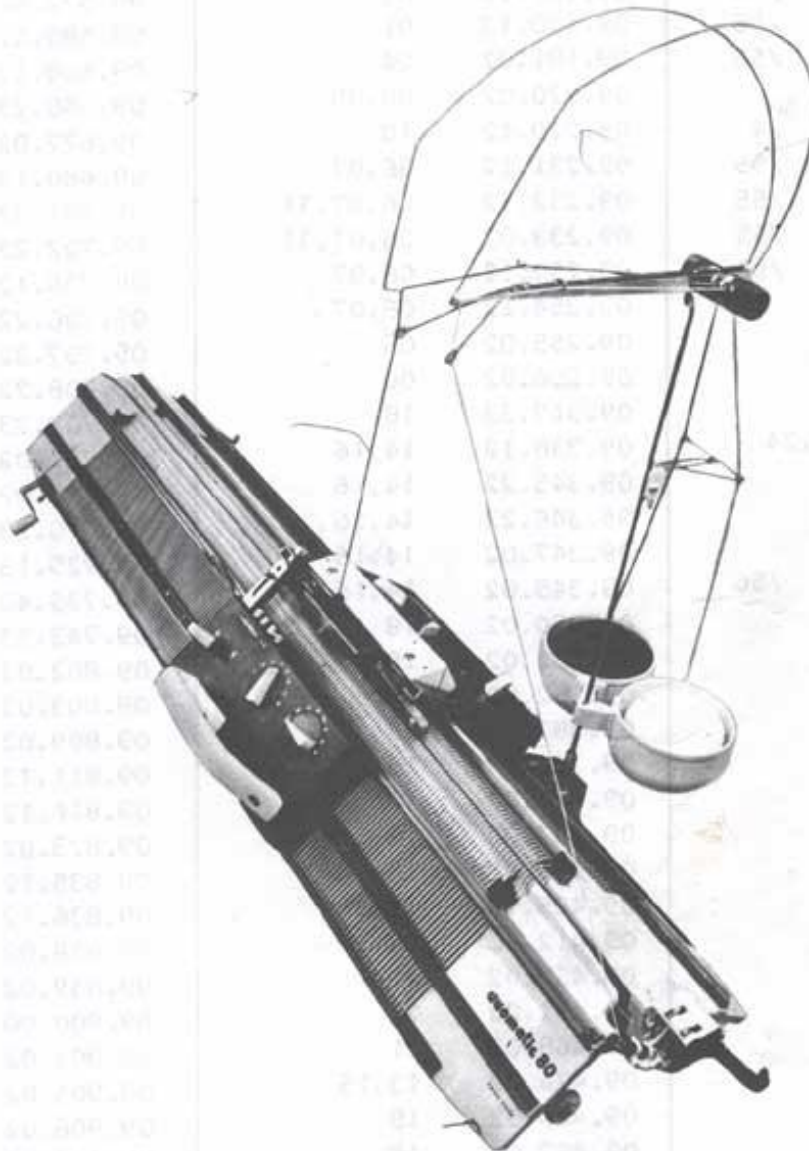


Photostückliste

Liste illustrée

Illustrated list

Lista ilustrada

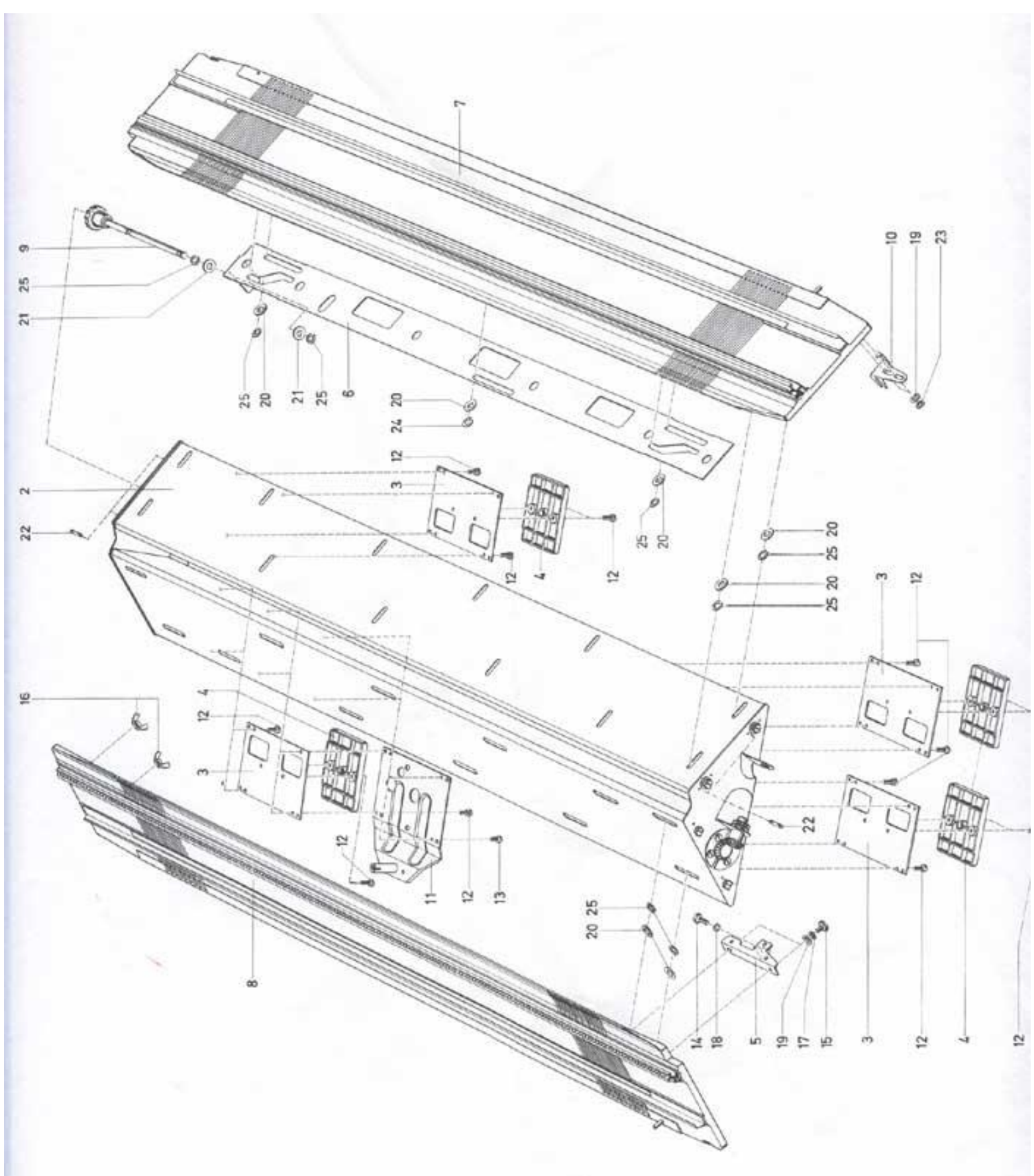


ACHTUNG : WENN EIN ✕ UNTER DER ART. NO. = PFAFF ART. NO. SIEHE SEITE 33.265.73 / 55 - 56

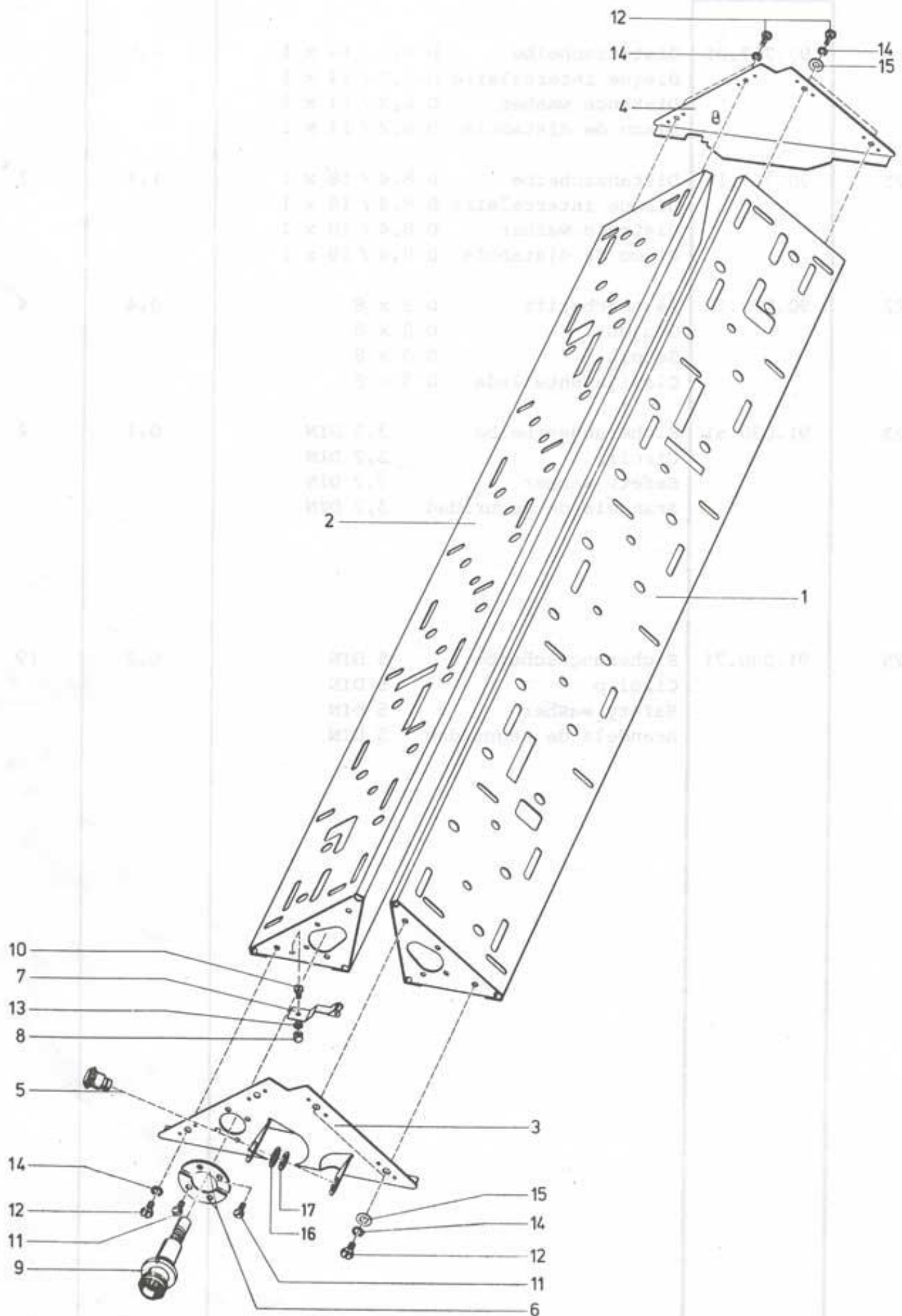
ATTENTION : AN ✕ BELOW THE ART. NO. MEANS = PFAFF ART. NO. SEE PAGES 33.265.73 / 55 - 56

ATENCIÓN : UN ✕ DEBAJO DEL NO. DE ARTICULO SIGNIFICA = ART. NO. PFAFF, VEASE PAGINA 33.265.73 / 55 - 56

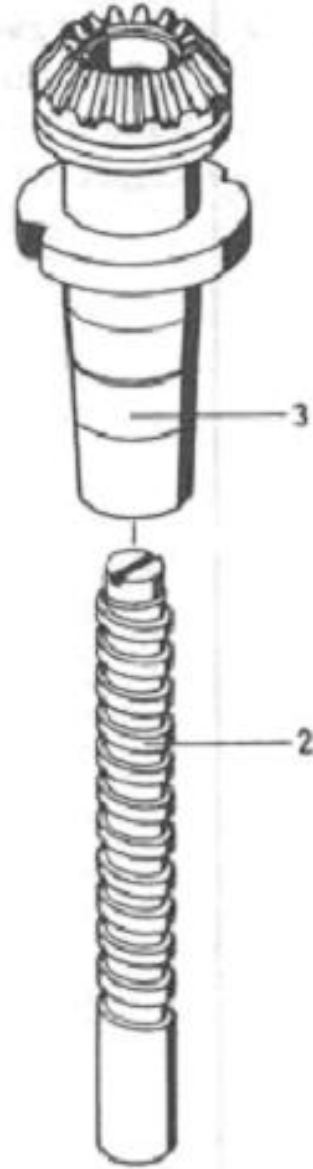
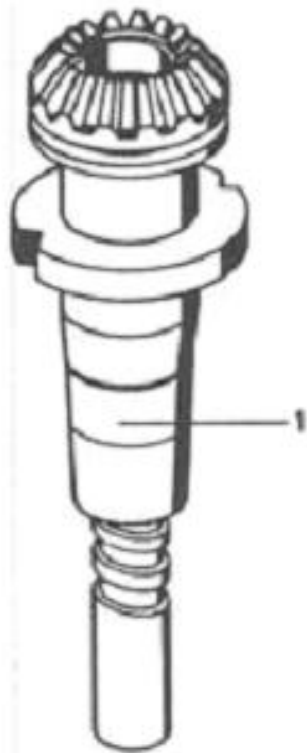
ATTENZIONE: QUANDO C'E ✕ SOTTO IL NUMERO D'ARTICOLO = NO. D'ART. PFAFF VEDI PAGINE 33.265.73 / 55 - 56



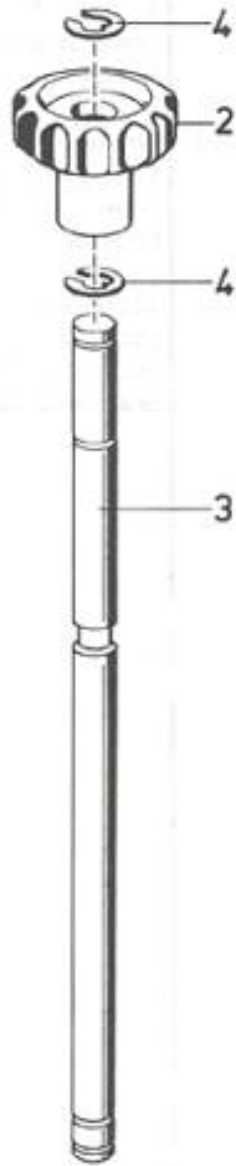
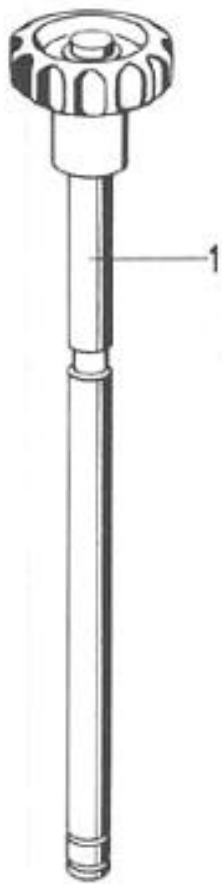
	MACHINE BODY	
2	09.041.20	M- Chassis
3	09.117.02	Stiffening plate
4	09.118.02	Rest
5	09.161.02	Carrier
6	09.170.13	Lowering slider
7	16.011.10*	M-Needle bed front DM80
8	16.012.10	back
9	16.024.01	VM-Lowering bar
10	16.032.02	Direction indicator
11	16.050.03	Support for mast
12	90.429.51	Cylinder screw M4 x 8
13	90.430.85	Special cylinder screw M4 x 8
14	90.465.11	Hexagon screw M5 x 10
15	90.483.71	Hexagon screw M4 x 8 with slot
16	90.640.01	Winged nut M3
17	90.700.51	Spring washer M4
18	90.700.61	Spring washer M5
19	90.765.92	Distance washer D4,2 / 10 x 1
20	90.767.01	Distance washer D 6,2 / 14 x 1
21	90.767.11	Distance washer D 8,4 / 18 x 1
22	90.872.12	Set pin D 3 x 8
23	91.030.51	Safety washer 3,2 din
25	91.030.71	Safety washer 5 din



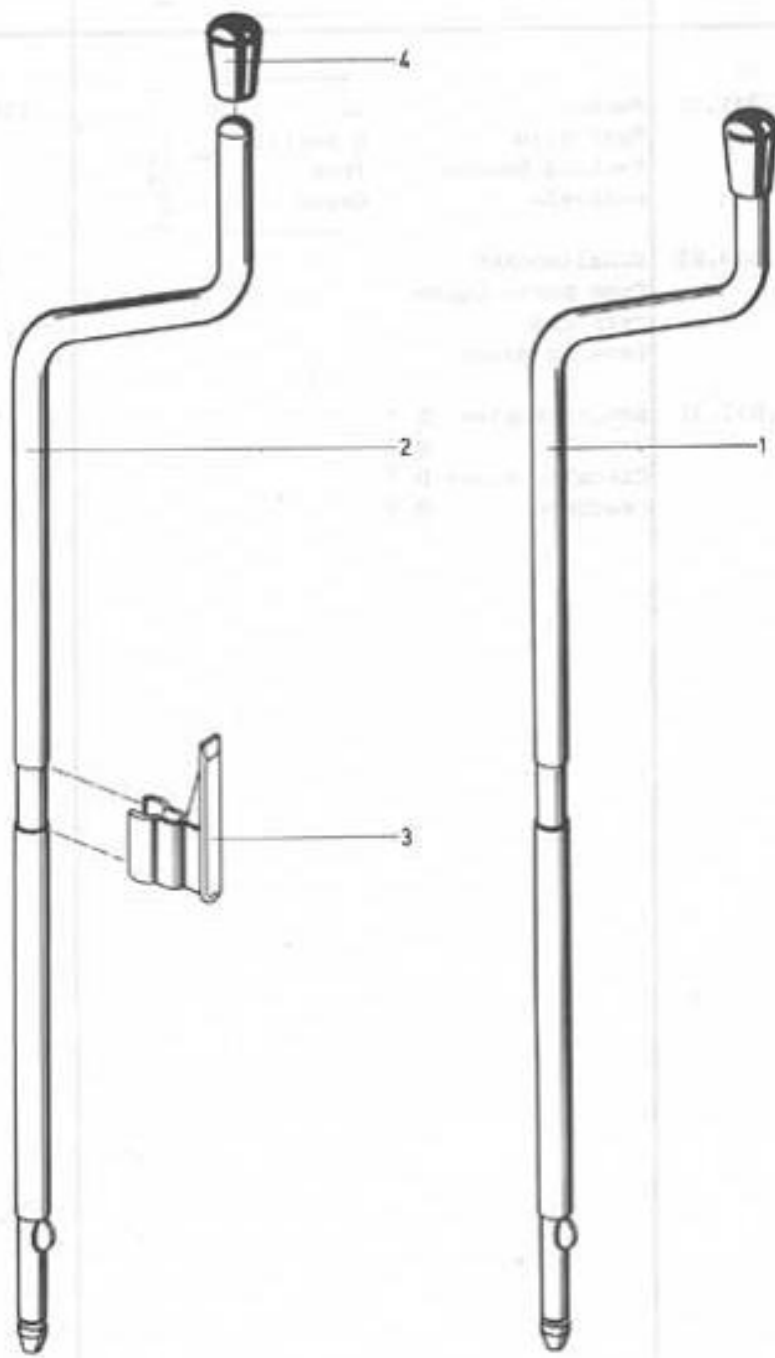
	09.041.20	CHASSIS
1	09.101.13	Chassis front
2	09.102.13	Chassis back
3	16.345.02	Connecting plate left from 3,032,001
4	09.116.12	Connecting plate right
5	16.343.03	Pinion from 3,032,001
6	09.153.12	Flange of bearing
7	09.155.13	Detent spring
8	09.159.02	Round nut M3
9	10.044.11	VM-Racking shaft
10	90.427.91	Cylinder screw M3 x 7
11	90.429.51	Cylinder screw M4 x 8
12	90.485.01	Hexagon screw M5 x 10 with slot
13	90.700.31	Spring washer M3
14	90.700.61	spring washer M5
15	90.766.51	Distance washer D 5,2 / 12 x 1
16	90.756.01	Washer D 13/20 x 2
17	91.031.11	Safety clip 9 DIN



1	10.044.11	VM-Racking shaft
2	09.150.02	Spindle
3	10.151.12	Racking Shaft

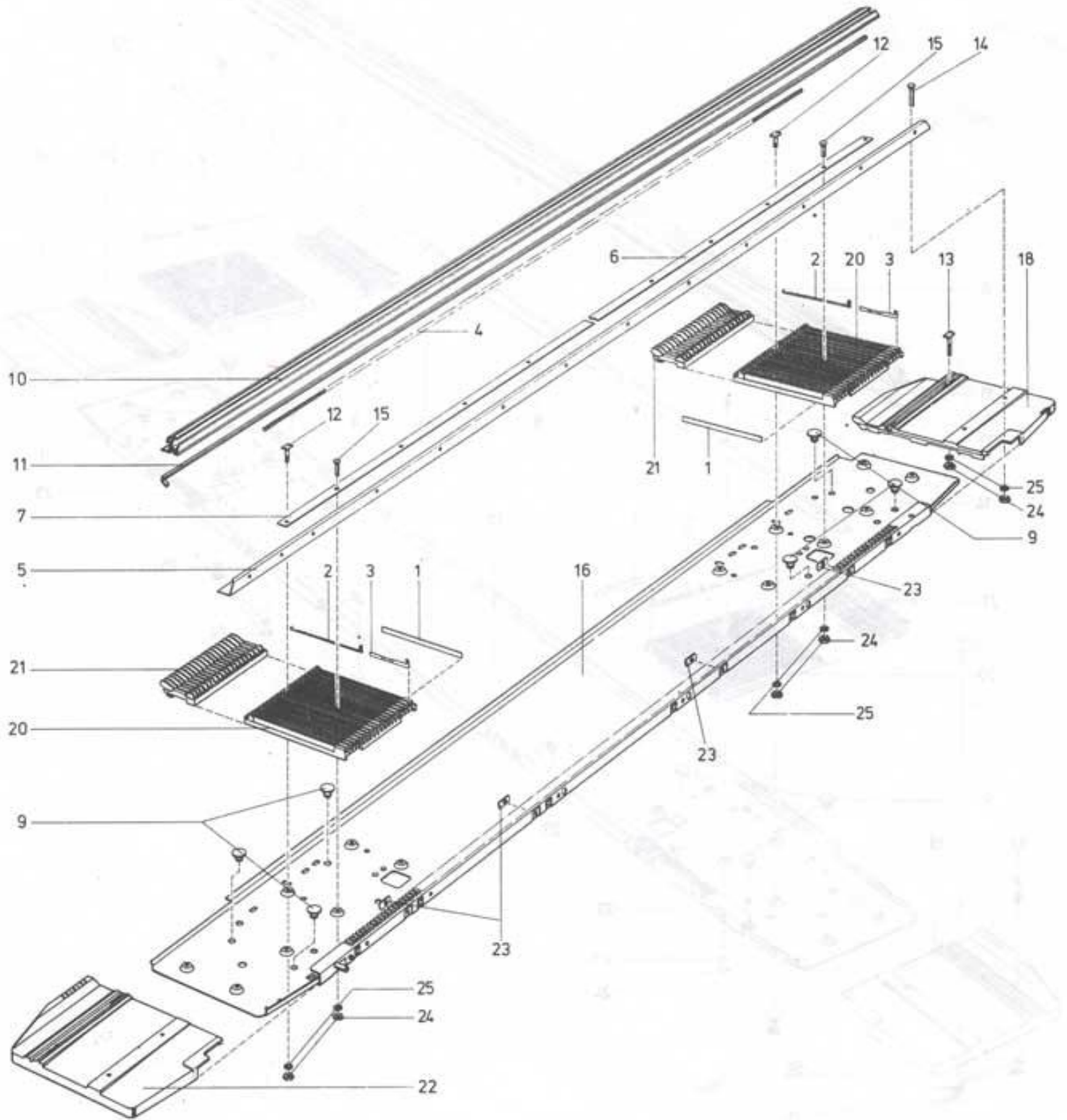


1	16.024.01	VM-Lowering bar
2	09.181.02	Lowering knob
3	16.048.02	Lowering bar
4	91.030.71	Safety washer 5 DIN



1	16.340.01	VM-Racking handle from 3,032.001
2	16.341.02	Racking handle from 3,032.001
3	16.033.02	Trip cam
4	92.821.31	Circular cover D 7

M-Nadelbett vorn
M-Fonture avant
M-Needle bed front
M-Cama delantera

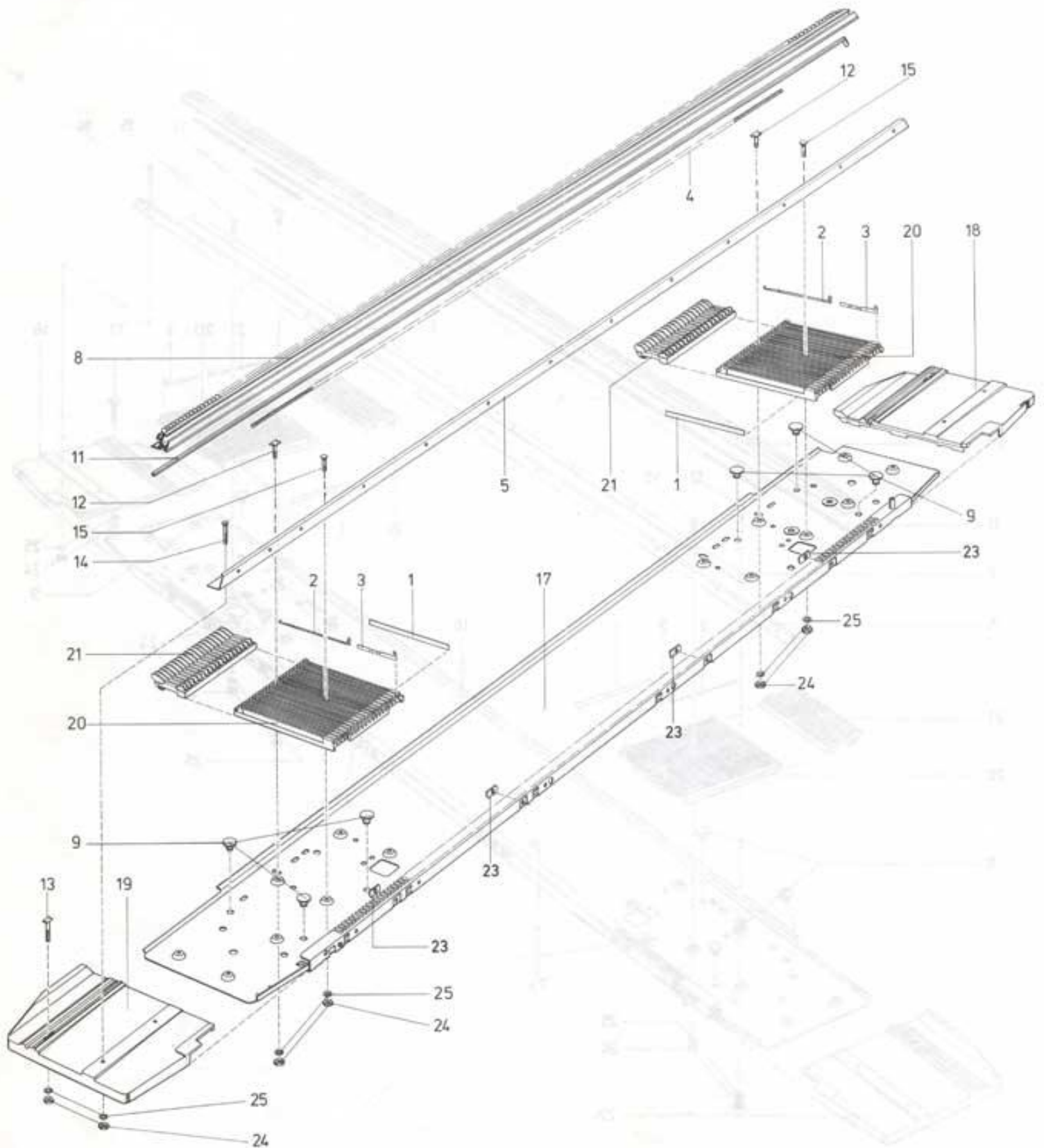


M-Nadelbett hinten

M-Fonture arrière

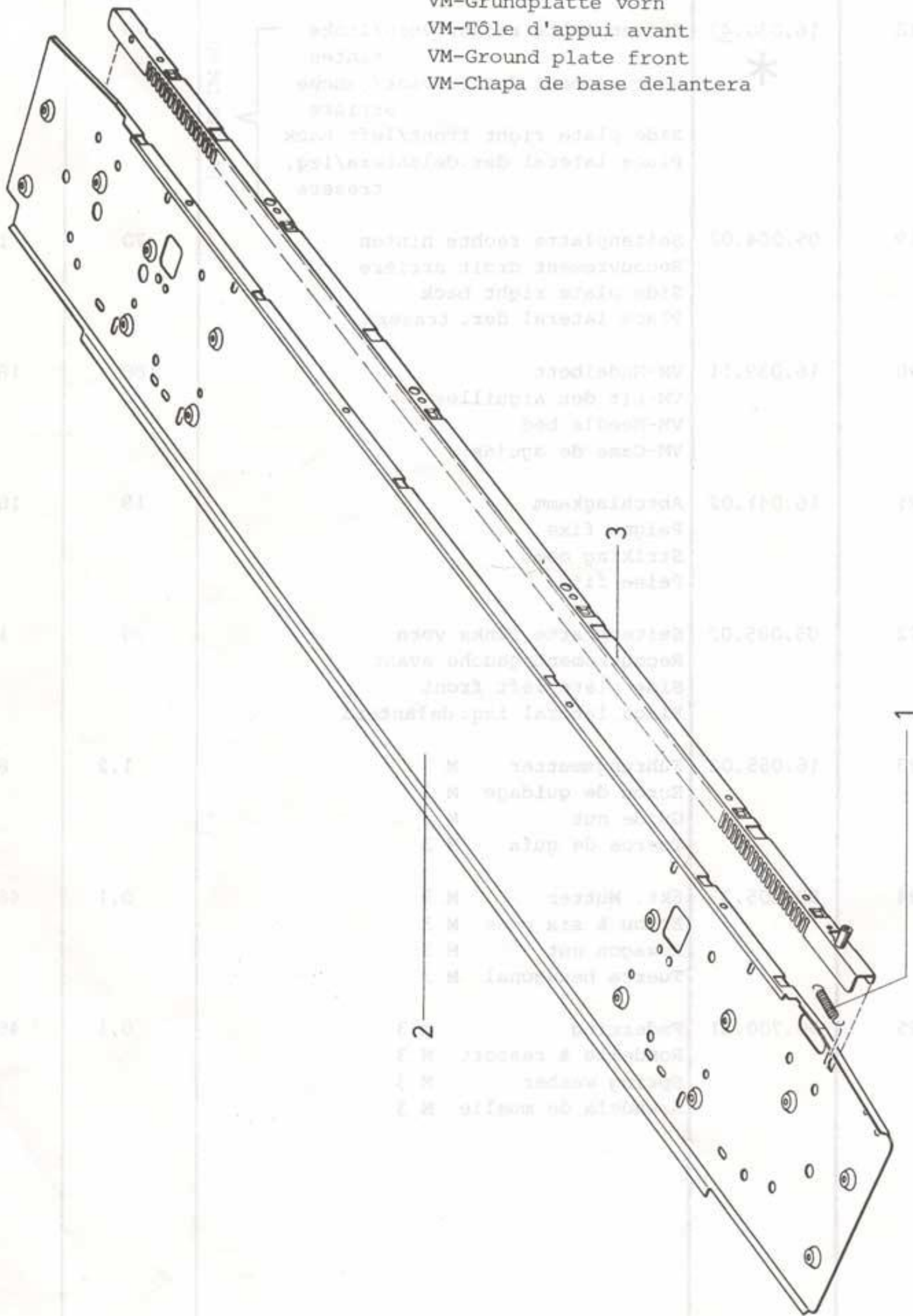
M-Needle bed back

M-Cama trasera

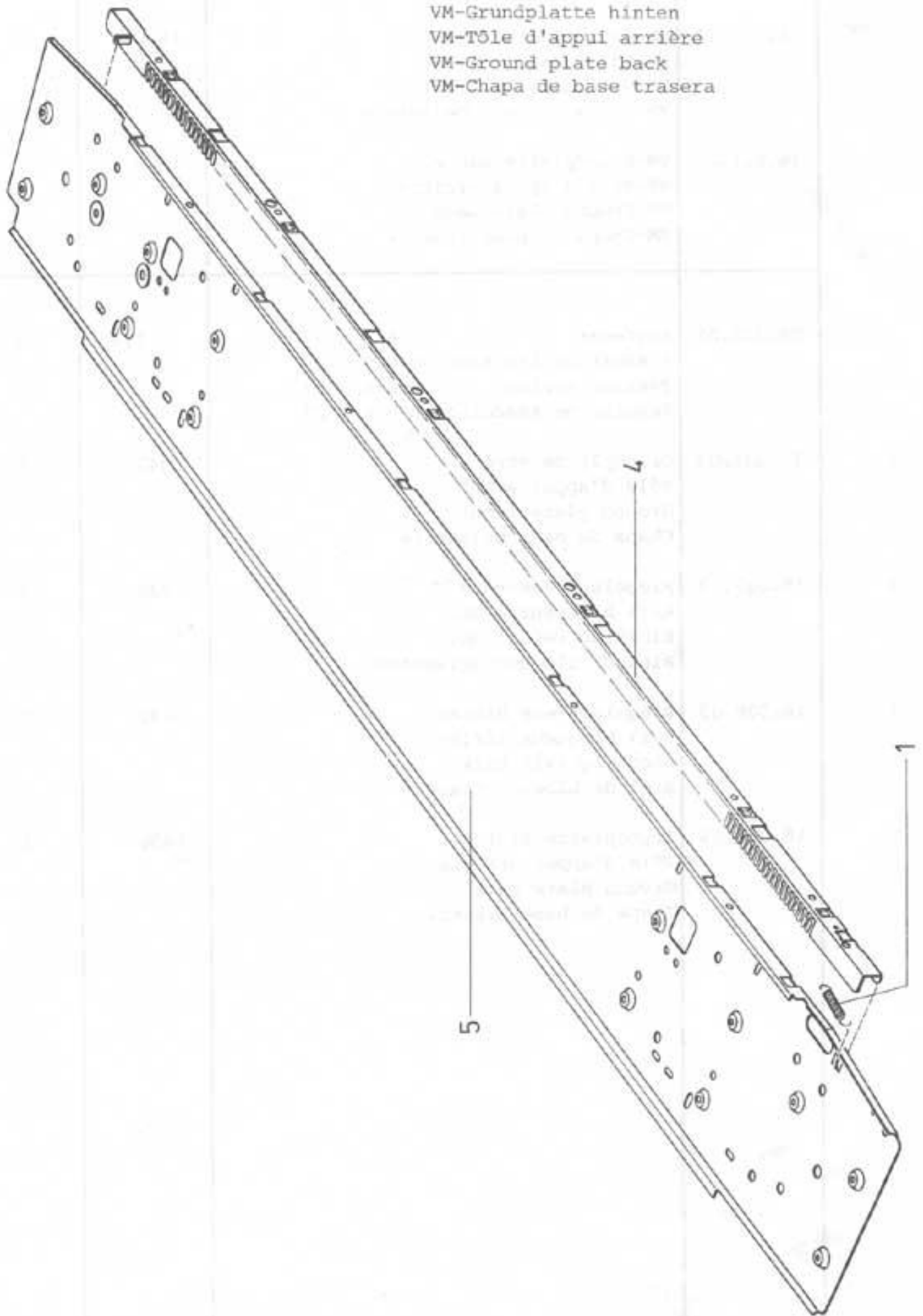


	16.011.10	M Needle bed front
	16.012.10	M Needle bed back
1	09.231.12	Intermediary plate 91.5mm
2	09.232.12	Latch needle
	09.965.02	Latch needle - nickel plated
3	09.233.02	Pusher
	09.966.02	Pusher - nickel plated
4	09.252.12	Brake spring Wire D=0,35mm
5	09.254.12	Guide Rail
6	09.255.02	Stitch scale left
7	09.256.02	Stitch scale right
8	10.050.21	VM Main rail back
9	10.210.02	Fixing bolt
10	10.244.12	Main rail
11	10.249.02	Needle rail
12	10.250.02	Special screw M3
13	10.251.02	Special screw long M3
14	11.785.12	Special cylinder screw long M3
15	11.786.12	Special cylinder screw M3
16	16.020.01	VM Ground plate front
17	16.021.01	VM Ground plate back
18	16.030.42*	Side plate right back DM80
19	05.084.02	Side plate right back
20	16.039.11	VM Needle bed
21	16.041.02	Striking comb
22	05.085.02	Side plate left front
23	16.055.02	Guide nut M3
24	90.605.31	Hexagon nut M3
25	90.700.31	Spring washer M3

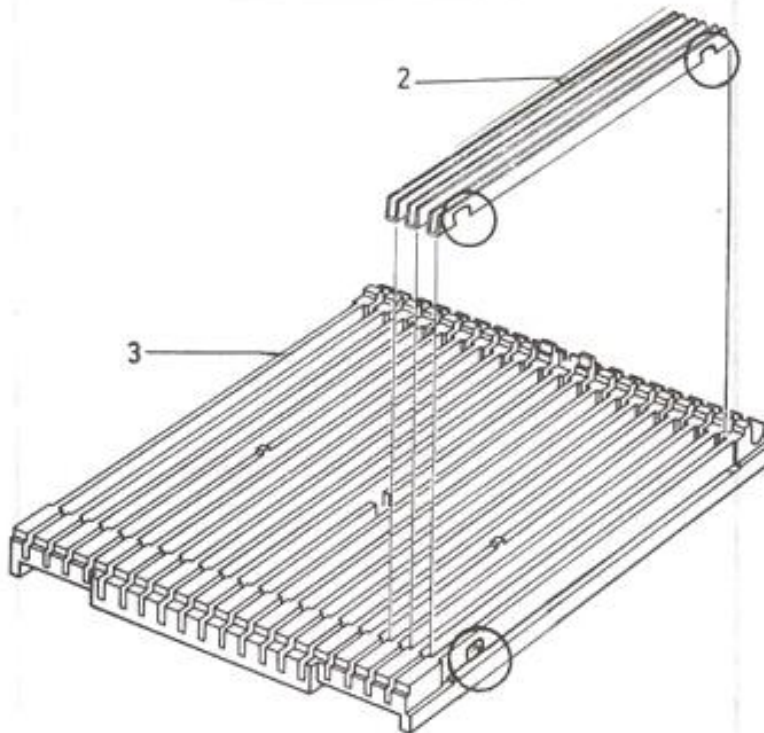
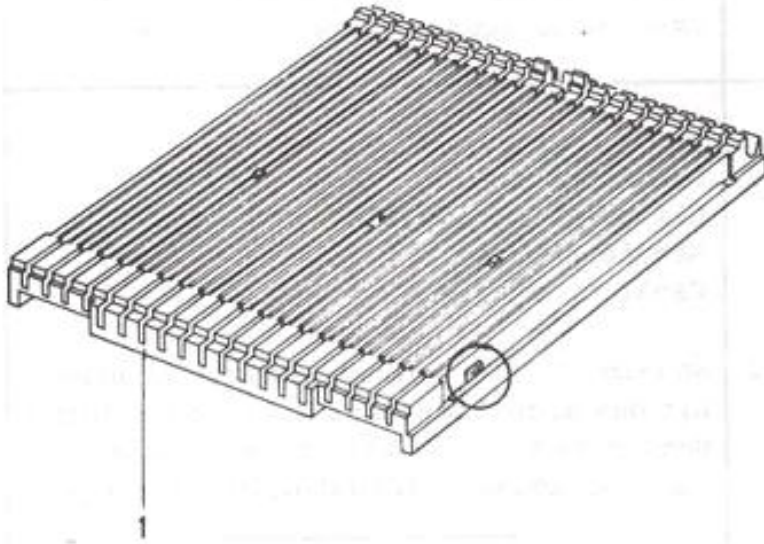
VM-Grundplatte vorn
VM-Tôle d'appui avant
VM-Ground plate front
VM-Chapa de base delantera



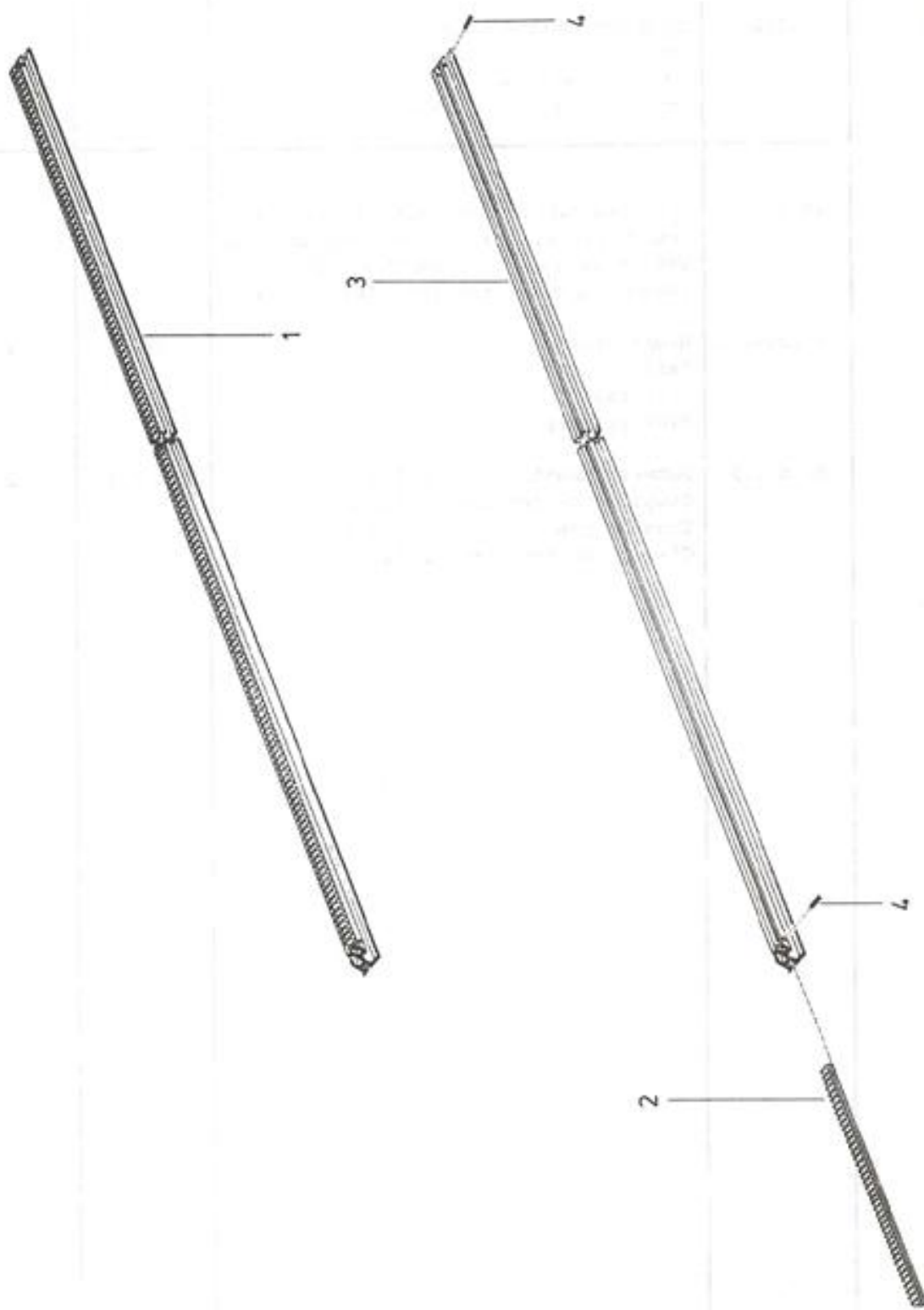
VM-Grundplatte hinten
VM-Tôle d'appui arrière
VM-Ground plate back
VM-Chapa de base trasera



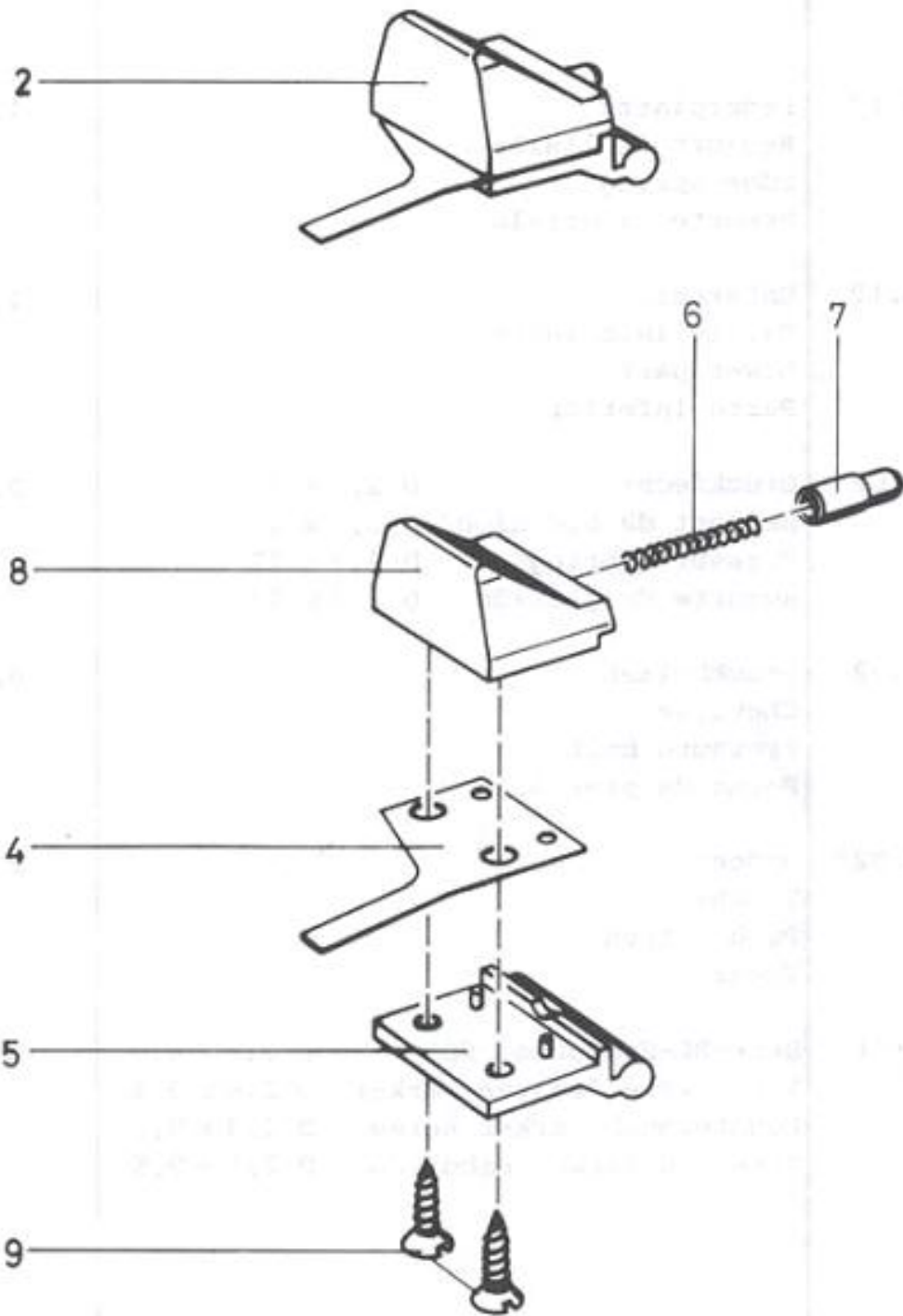
	16.020.01	VM Ground plate front
	16.021.01	VM Ground plate back
1	09.220.02	Tension spring D 6,8 x 27
2	16.035.03	Ground plate front
3	16.037.03	Blocking rail front
4	16.038.03	Blocking rail back
5	16.042.03	Ground plate back



1	16.039.11	VM Needle bed with needle channels
2	09.229.12	Needle Channel
3	16.040.12	Needle Bed without channels
		see yellow information sheet 180.3.19

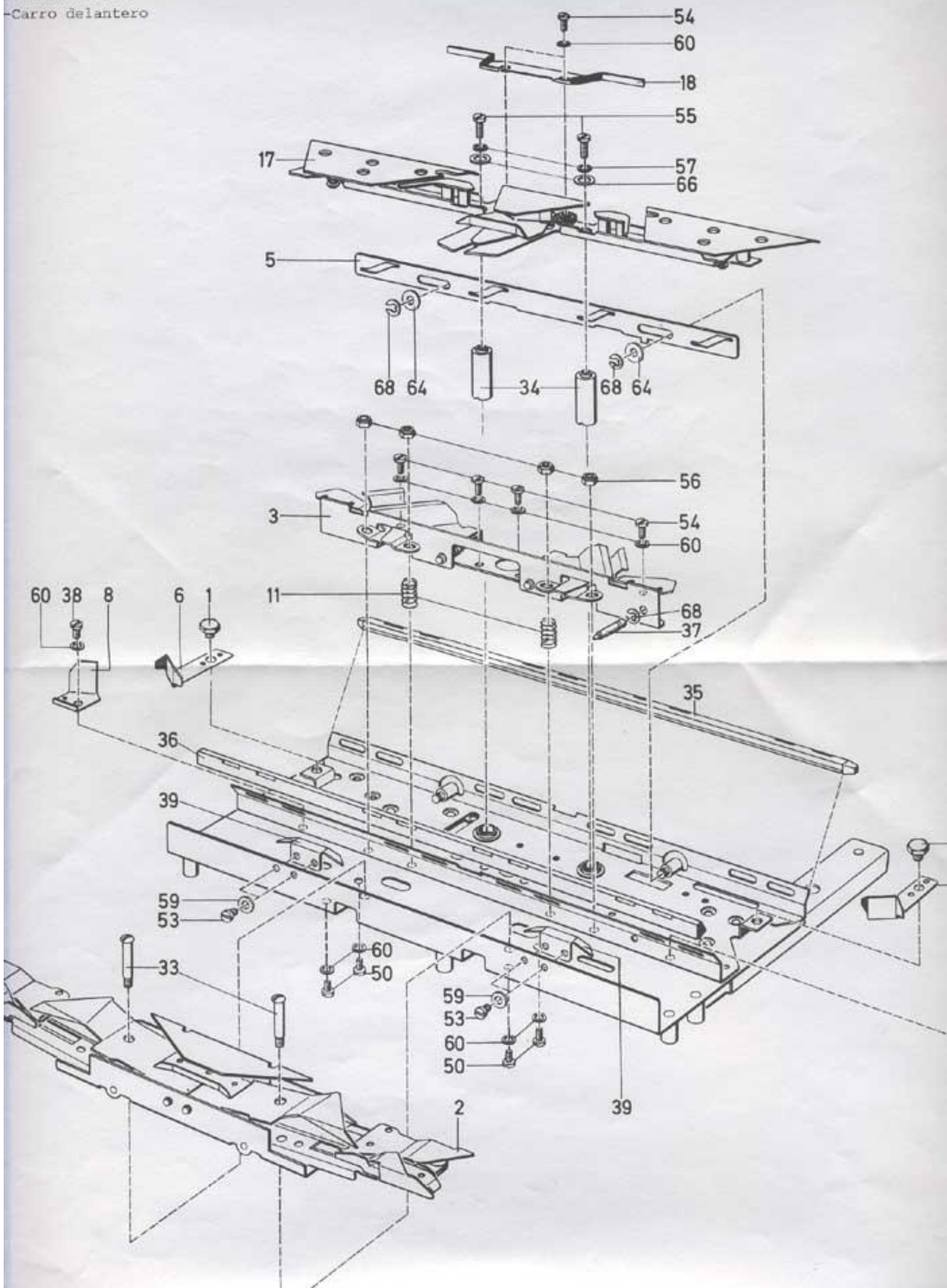


	10.050.21	VM Main rail back
2	09.077.01	Set of racks with 7 racks
3	10.244.12	Main rail
4	90.810.51	Tension pin D 1,5 x 7

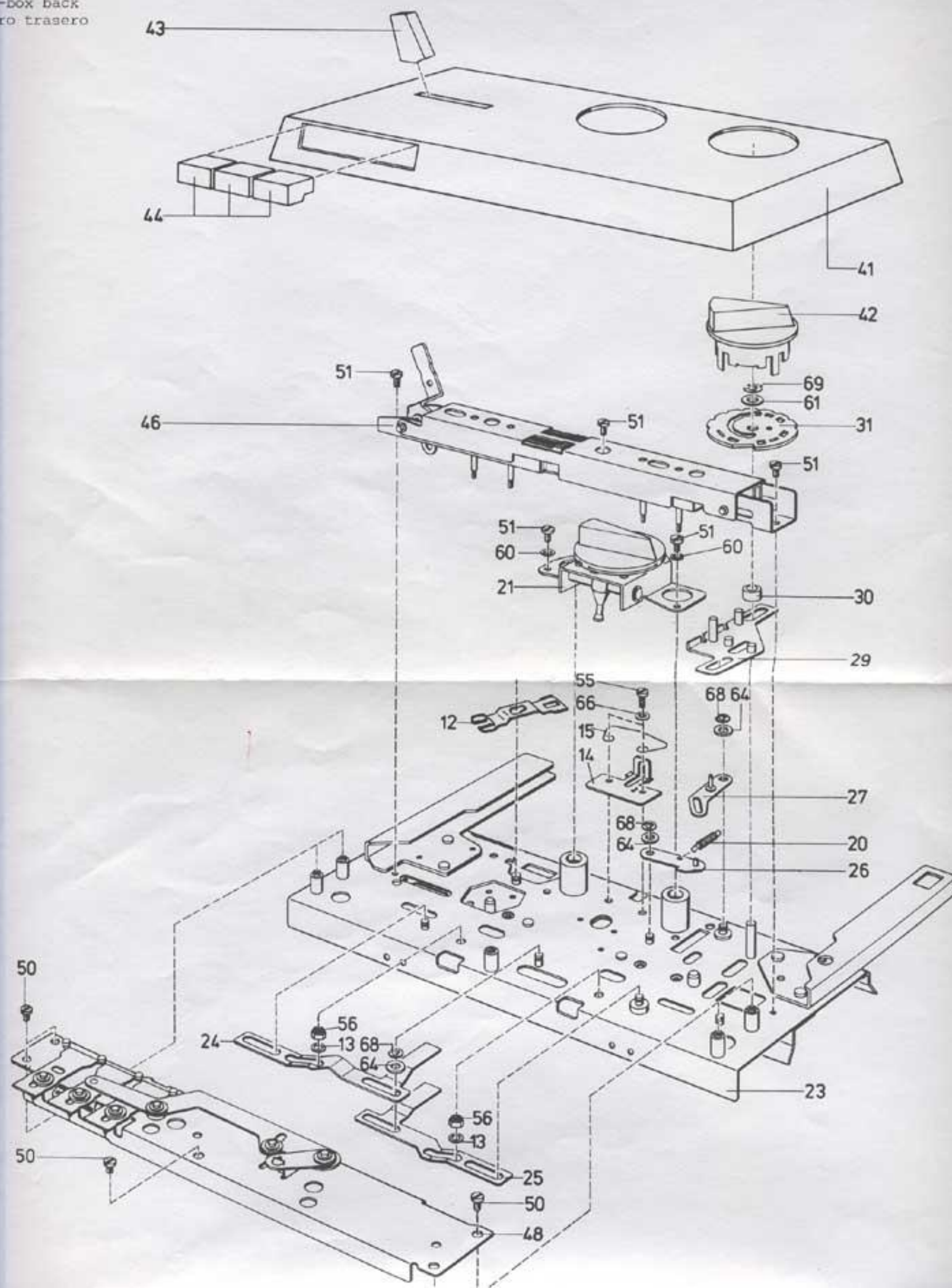


2	16.023.01	VM - Edge Spring
4	09.835.12	Edge Spring
5	09.836.12	Lower Part
6	09.838.02	Pressure Spring D 2,7 x 17
7	09.839.02	Pressure Bolt
8	16.049.02	Push Button
9	90.330.81	Countersunk Parker Screw D 2,9 x 9,5

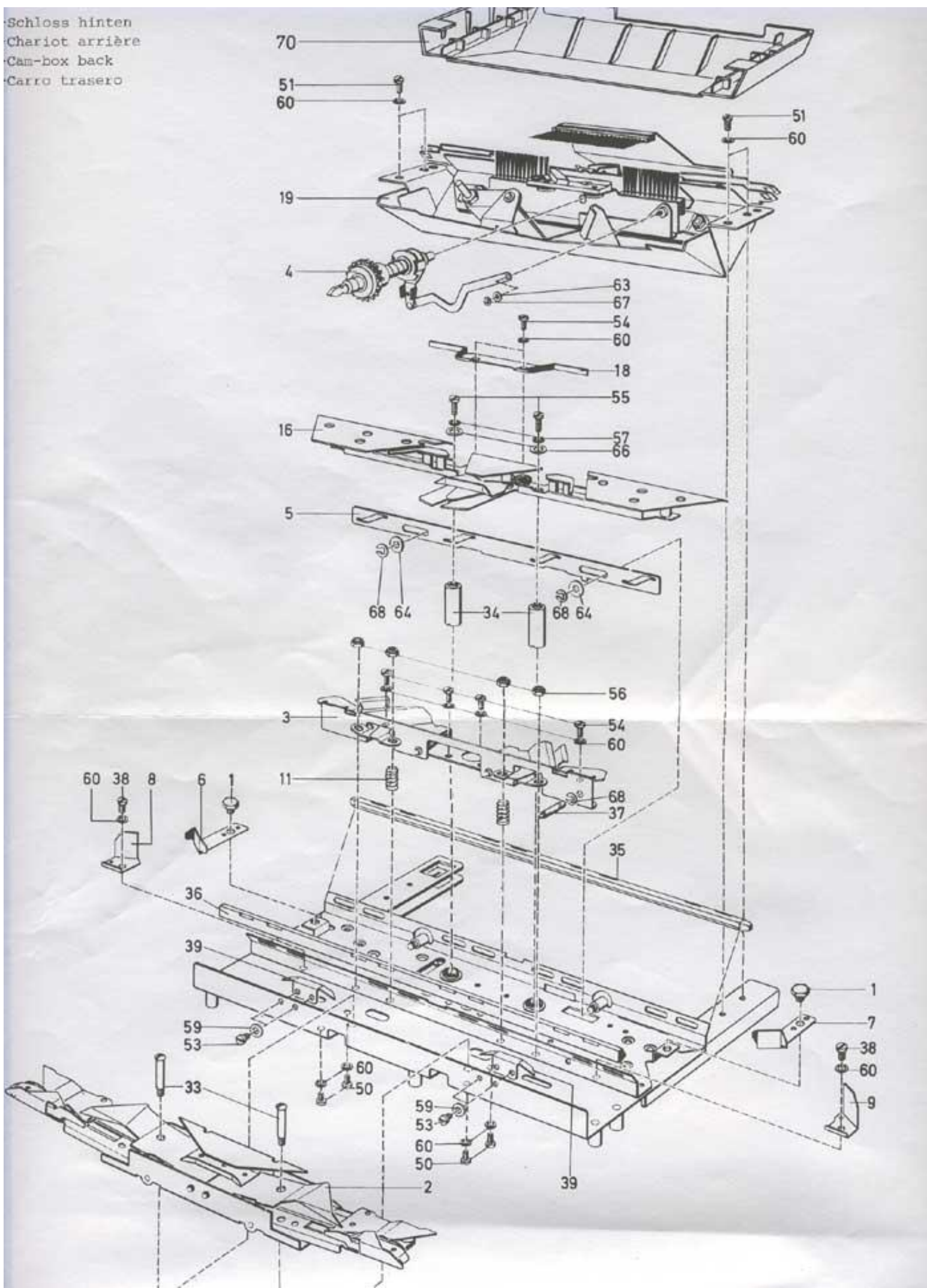
-Cam-box front
-Carro delantero



riot arrière
-box back
ro trasero

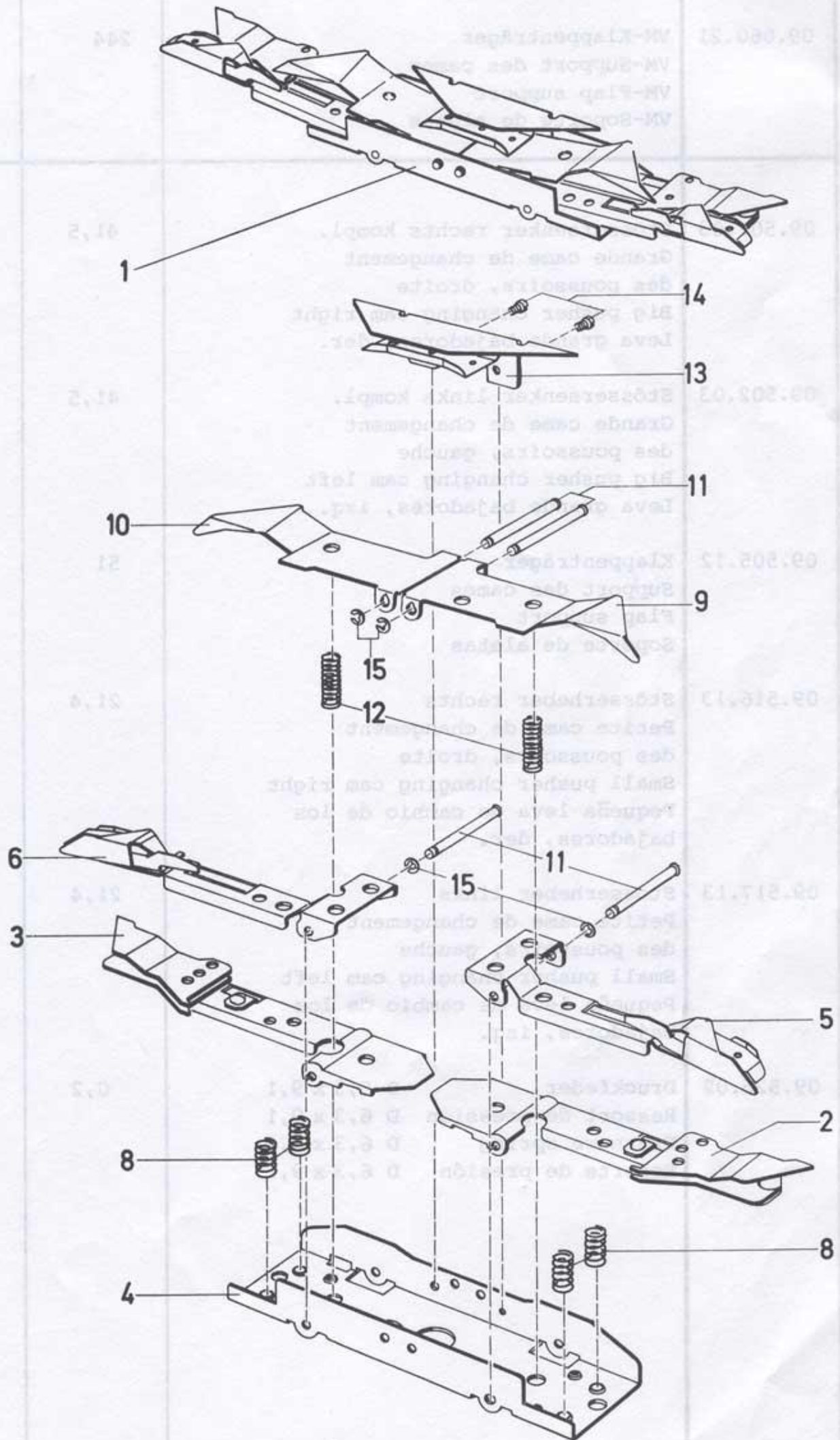


Schloss hinten
Chariot arrière
Cam-box back
Carro trasero

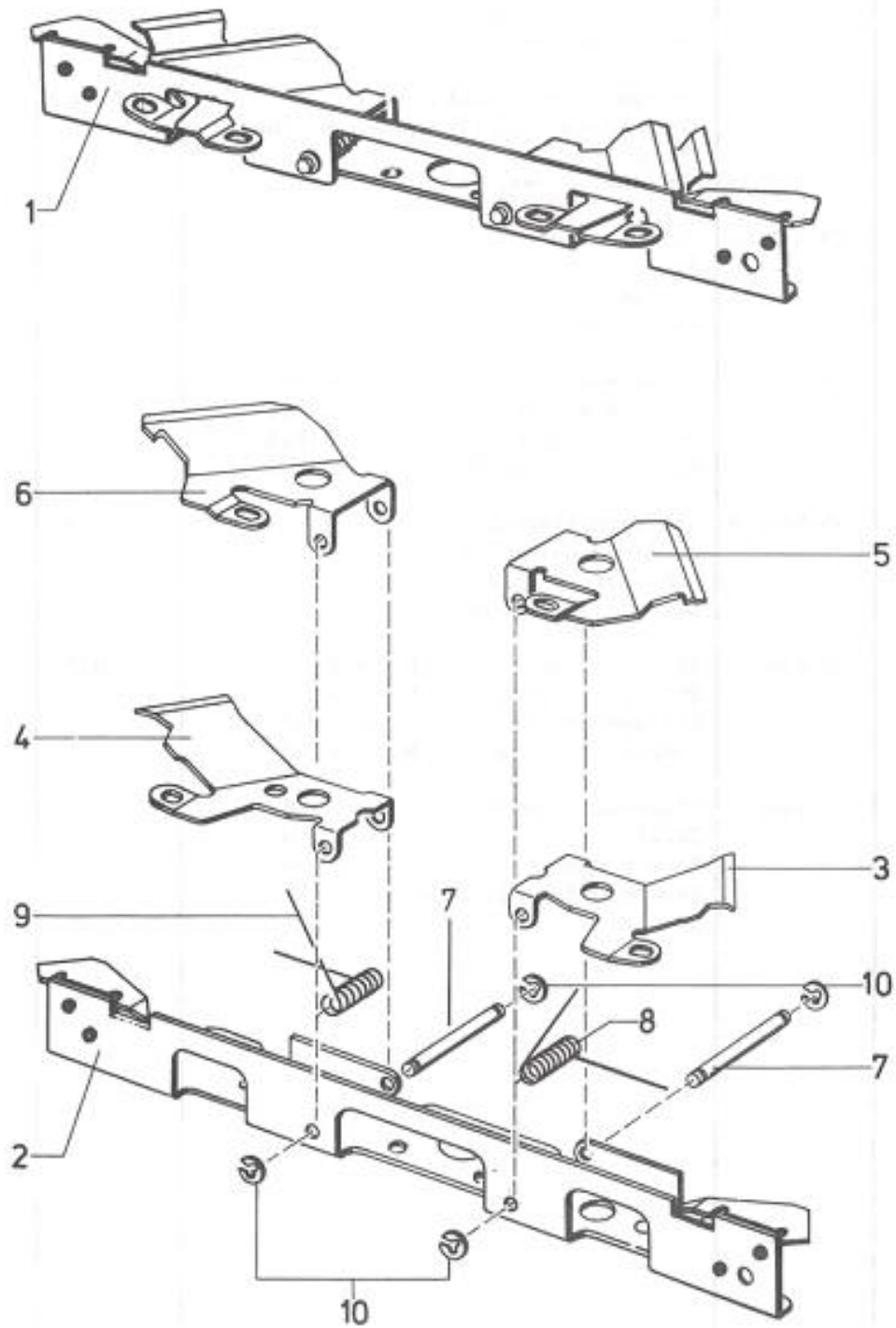


	16.100.20	M Cam box front white
	16.101.20	M Cam box back white
1	07.130.02	Special hexagon screw M4
2	09.060.21	VM Flat support
3	09.064.11	VM Carrier
4	09.067.51	VM Drive of feeding eyelet
5	09.338.12	Cam slider
6	09.345.22	Rejector left
7	09.346.22	Rejector right
8	09.347.02	Auxiliary rejector left
9	09.348.02	Auxiliary rejector right
11	09.388.02	Pressure spring D 7 X 12,4
12	09.412.22	Cam control fork
13	09.474.02	Pressure ring
14	09.570.22	Axle carrier
15	09.572.02	Holding cleat
16	10.057.11	VM Control plate back
17	10.072.01	VM Control plate front
18	10.398.02	Deviating plate
19	14.614.00	M Lock unit
20	15.292.02	Tension spring D 4,2 x 17
21	05.115.01	VM Adjustment support white
22	16.110.01	VM Ground plate of cam box front
23	16.111.23	Ground plate of cam box back
24	16.131.02	Pusher slider left
25	16.132.02	Pusher slider right
26	16.133.03	Catch lever
27	16.135.03	Notch lever
29	16.138.03	Program slider
30	16.143.02	Bush large
31	16.144.02	Cam plate
33	16.148.02	Stop bolt M3
34	16.158.02	Guide bolt
35	16.160.12	Cam box guide top
36	16.161.12	Cam box guide bottom
37	16.155.02	Axle for N-X lever
38	16.166.02	Special cylinder screw M3
39	16.167.02	Pusher retaining cam
40	16.178.13*	Hood Front
41	16.181.12*	Hood Back

42	05.215.02	Control button white
43	16.187.02	N-X Lever
44	16.188.02	Key
45	16.189.02	Handle
46	16.200.01	VM Commanding device
47	16.250.01	VM Key support front
48	16.251.01	VM Key support back
49	16.300.10	M Row counter K
50	90.412.01	Cylinder screw M 3 x 4
51	90.412.17	Cylinder screw M 3 x 5
52	90.413.41	Cylinder screw M 4 x 8
53	90.414.94	Cylinder screw M 3 x 3,5
54	90.427.81	Cylinder screw M 3 x 6
55	90.428.01	Cylinder screw M 3 x 8
56	90.632.57	Sleeve nut M 3
57	90.700.31	Spring washer M 3
58	90.700.51	Spring washer M 4
59	90.711.23	Tension disc M 3
60	90.715.31	Spring washer M 3
61	90.750.62	Washer D 5,3 / 10 x 1
63	90.765.12	Distance washer D 2,6 / 6 x 0,2
64	90.765.92	Distance washer D 4,2 / 10 x 1
66	90.767.81	Distance washer D 3,2 / 8 x 1
67	91.030.31	Safety washer 1,9 DIN
68	91.030.51	Safety washer 3,2 DIN
69	91.030.61	Safety washer 4 DIN
70	05.253.02*	Cover back
71	16.152.02	Pressure spring D 6,5 x 10
72	16.153.02	Knob
73	16.154.02	Axle

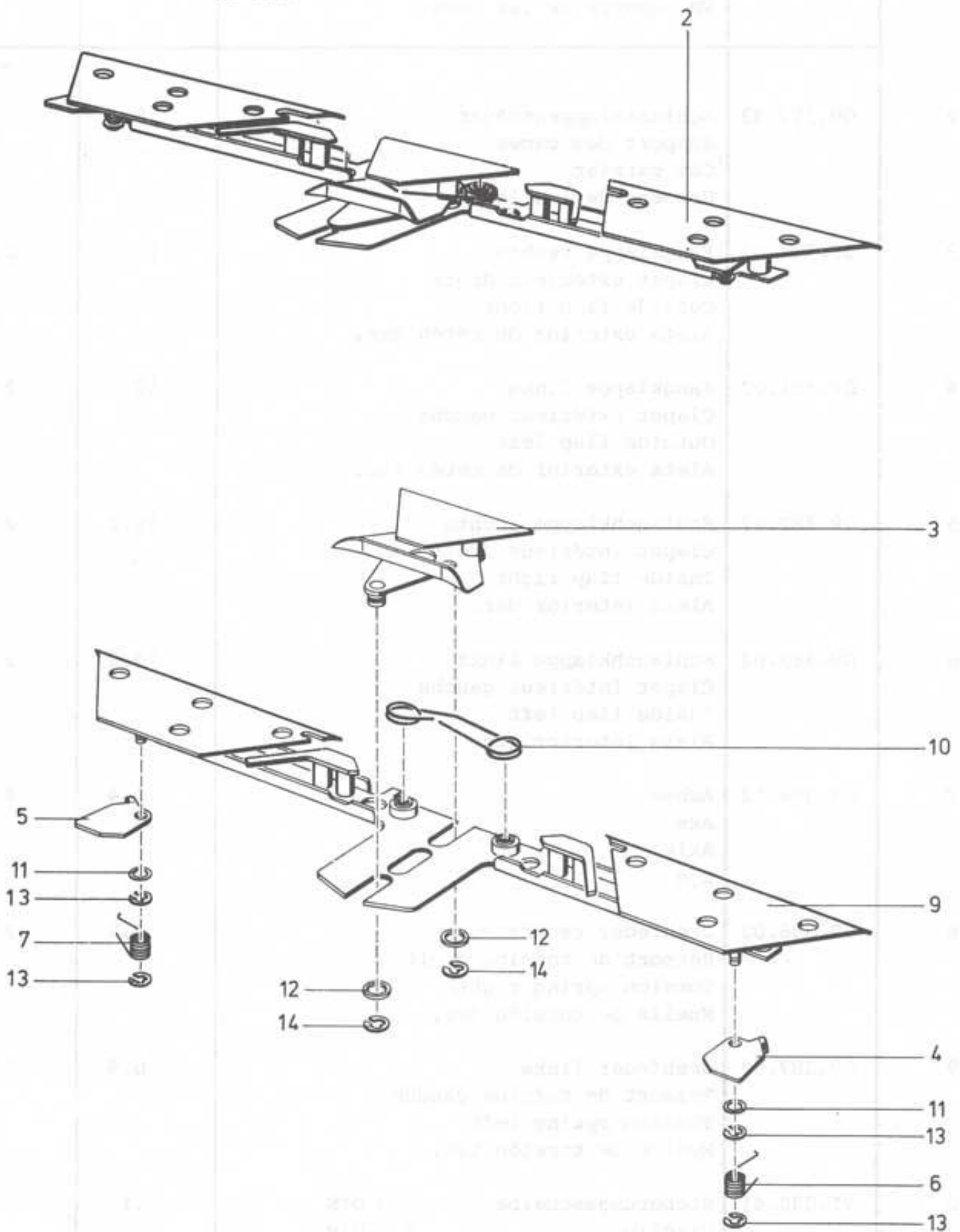


1	09.060.21	VM Flap support
2	09.501.03	Big pusher changing cam right
3	09.502.03	left
4	09.905.12	Flap support
5	09.516.13	Small pusher changing cam right
6	09.517.13	left
8	09.526.02	Pressure spring D 6,3 x 9,1
9	09.530.12	Pusher cam right
10	09.531.12	Pusher cam right
11	09.532.02	Cam axle
12	09.533.02	Pressure spring D 5,7 x 16,8
13	09.534.03	Auxiliary pusher cam
14	90.426.51	Cylinder screw M 2,6 x 2,5
15	91.030.31	Safety washer 1,9 DIN

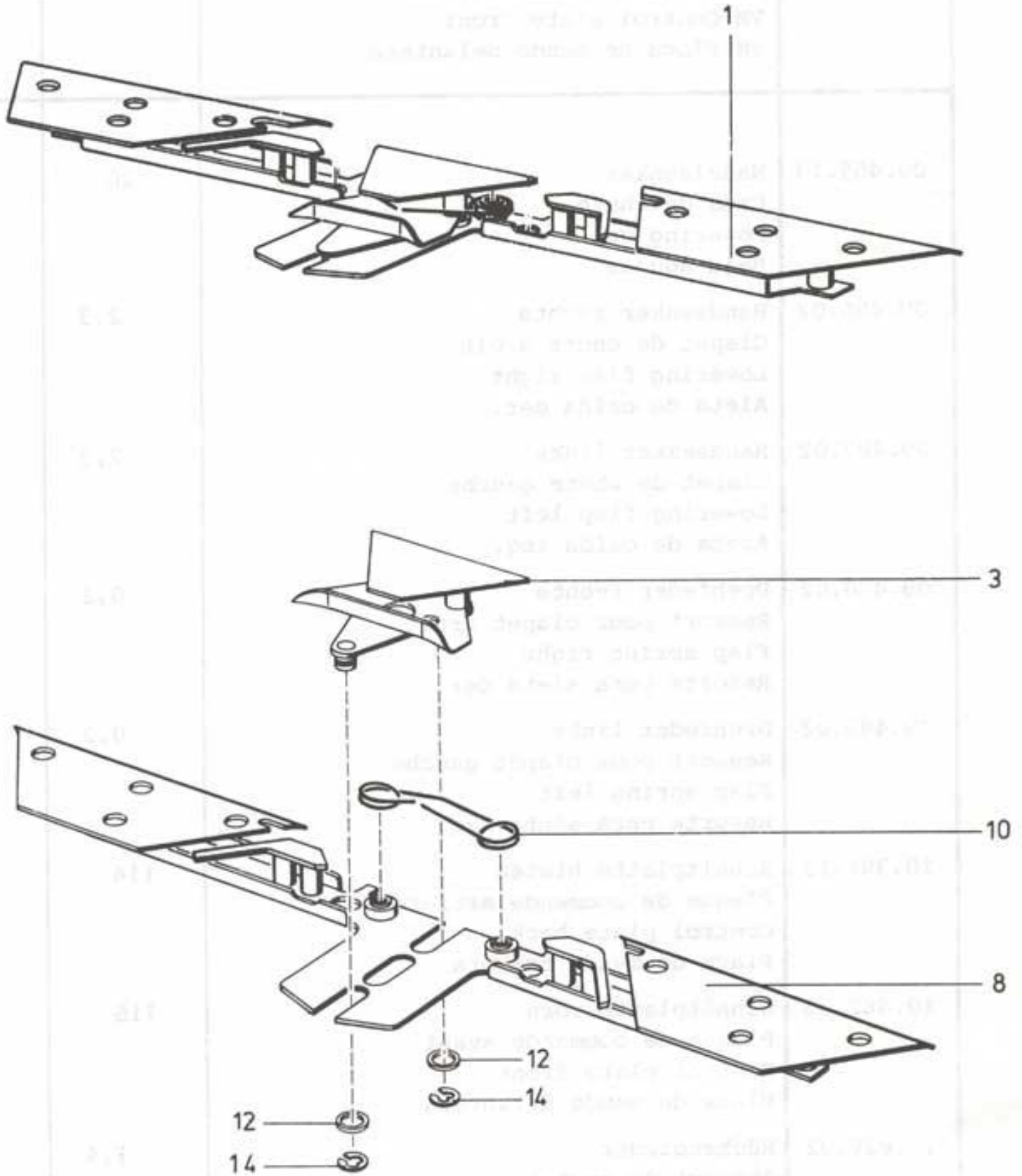


1	09.064.11	VM Cam carrier
2	09.317.33	Cam carrier
3	09.380.02	Outside flap right
4	09.381.02	Outside flap left
5	09.382.02	Inside flap right
6	09.383.02	Inside flap left
7	09.384.12	Axle
8	09.386.02	Torsion spring right
9	09.387.02	Torsion spring left
10	91.030.41	Safety washer 2,3 DIN

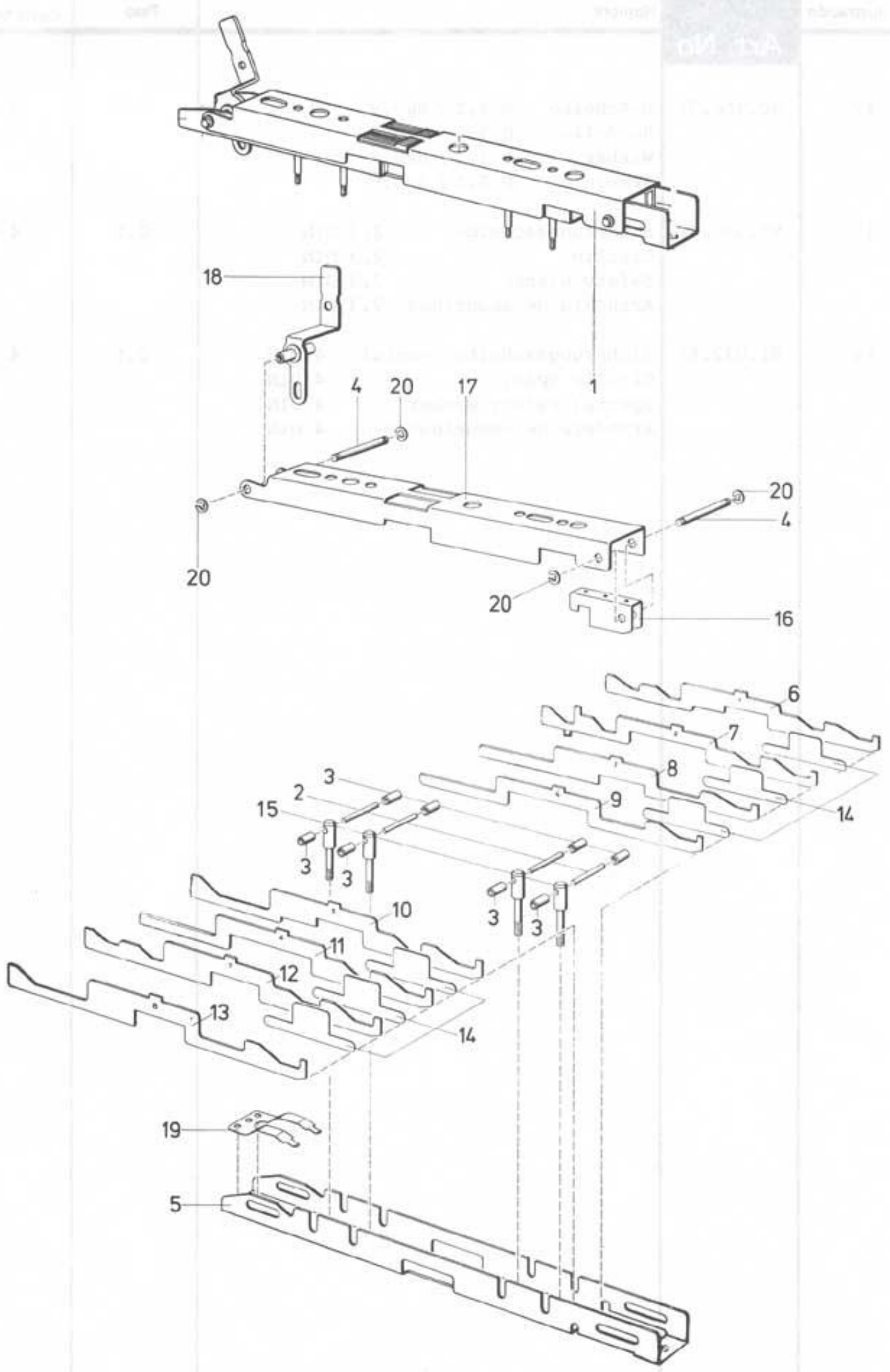
VM-Schaltplatte vorn
 VM-Plaque de commande avant
 VM-Control plate front
 VM-Placa de mando delantera



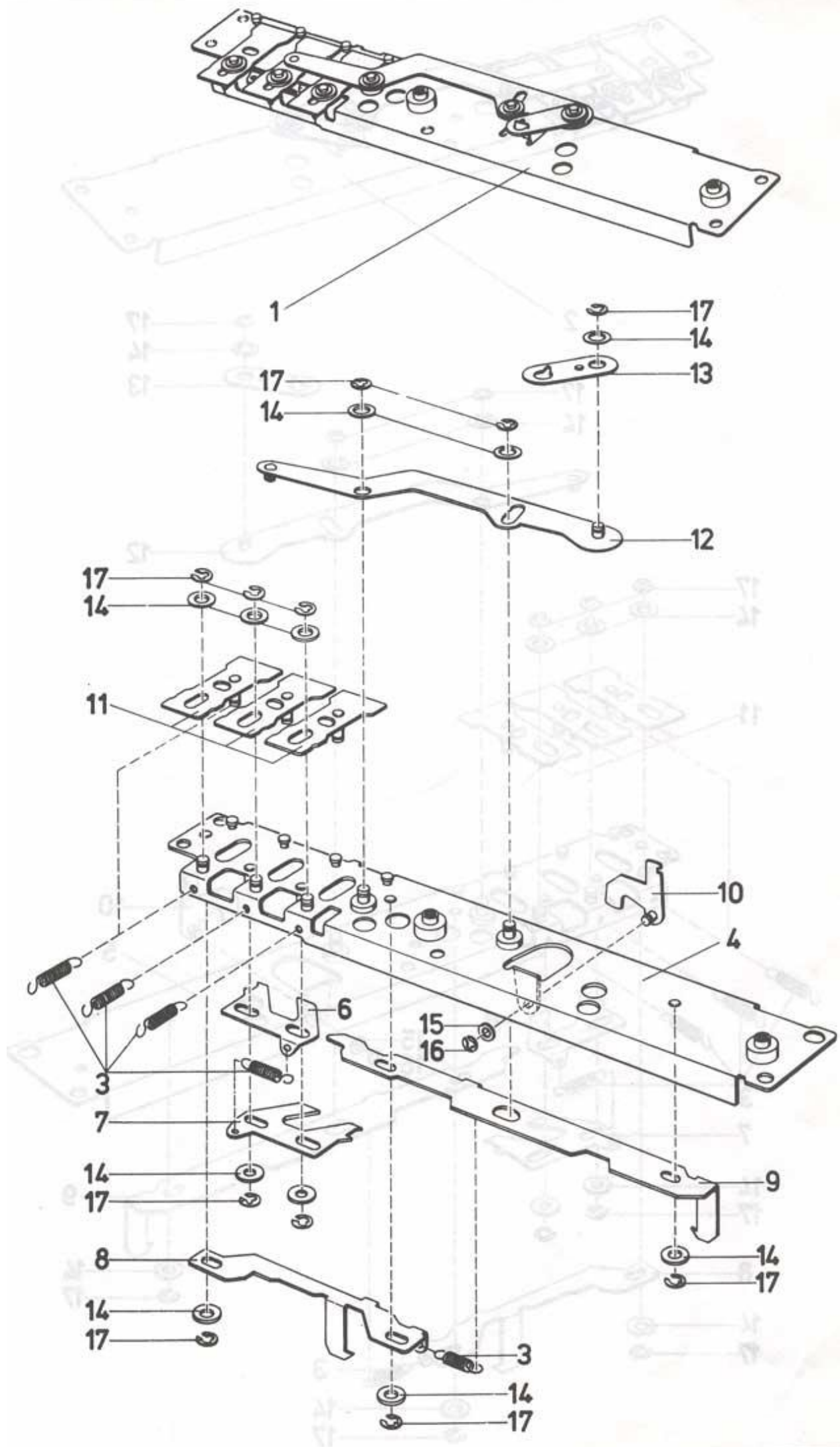
VM-Schaltplatte hinten
VM-Plaque de commande arrière
VM-Control plate back
VM-Placa de mando trasera

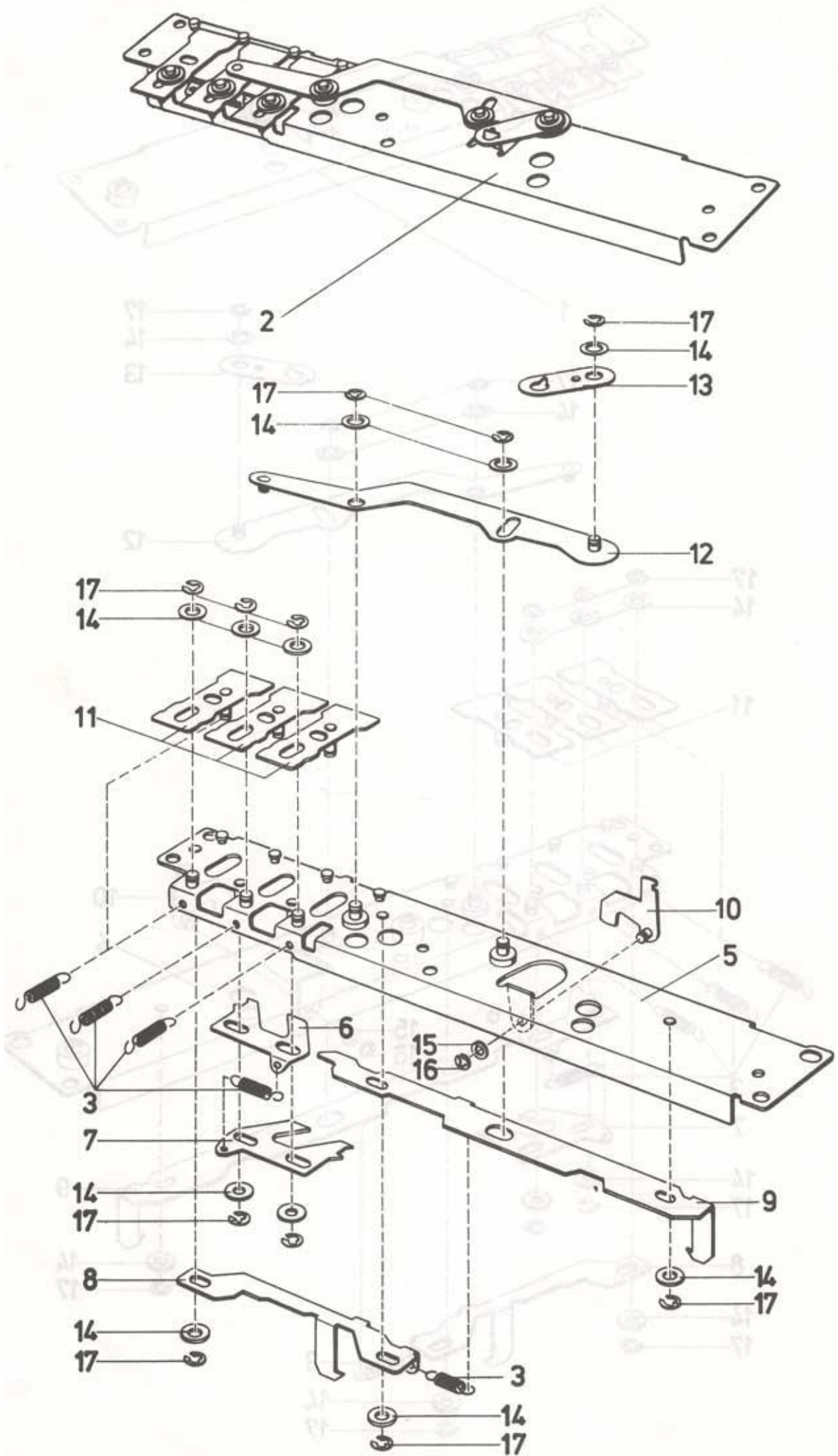


1	10.057.11	VM Control plate back
2	10.072.01	front
3	09.405.13	Lowering cam
4	09.486.02	Lowering flap right
5	09.487.02	Lowering flap left
6	09.488.02	Flap spring right
7	09.489.02	Flap spring left
8	10.391.13	Control plate back
9	10.482.03	Control plate front
10	11.829.02	Pulling spring
11	90.765.81	Washer D 4,2 / 7 x 0,2
12	90.766.71	Washer D 5,2 / 8 x 0,9
13	91.030.41	Safety washer 2,3 DIN
14	91.032.51	Special safety washer 4 DIN

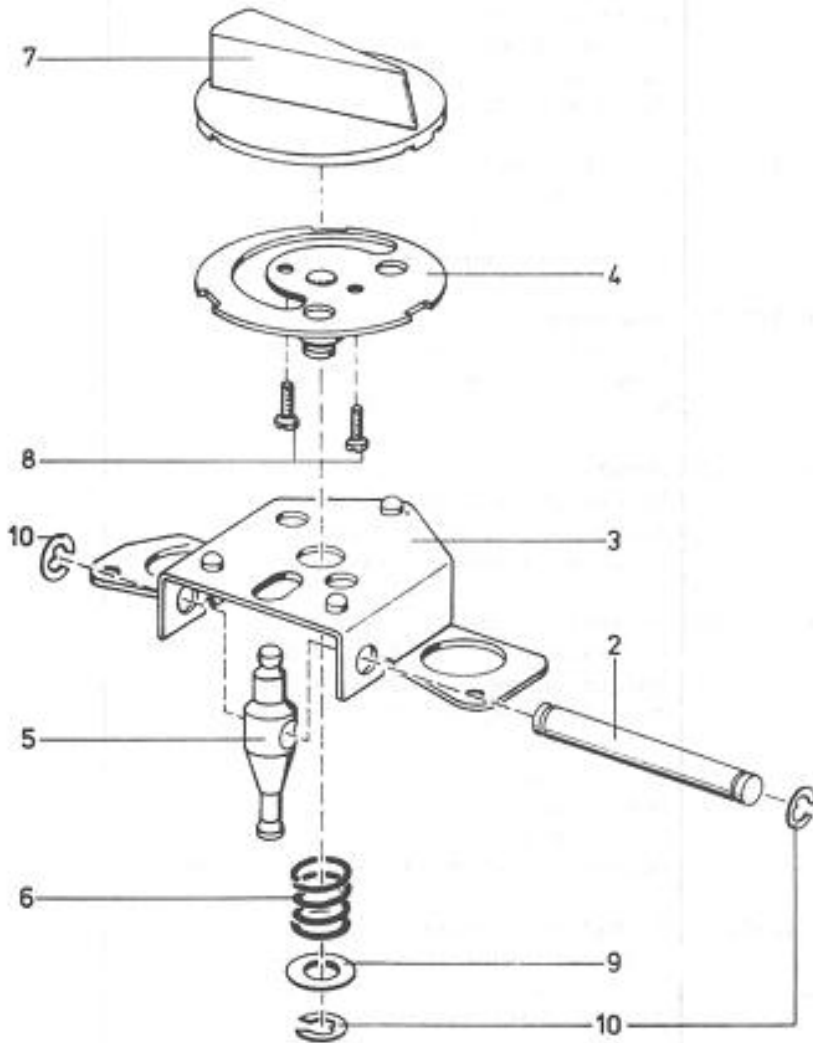
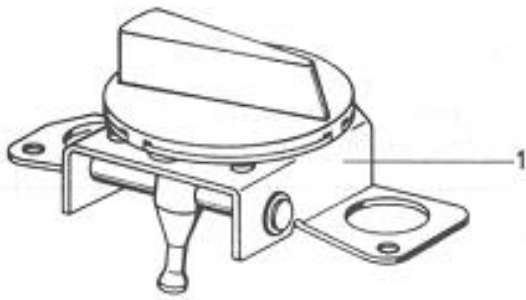


1	16.200.01	VM Commanding device
2	09.450.02	Lateral axle
3	09.451.02	Guiding bush
4	09.468.02	Driving axle
5	16.210.02	Base Plate
6	16.211.02	Curved slider 1
7	16.212.02	Curved slider 2
8	16.213.02	Curved slider 3
9	16.214.02	Curved slider 4
10	16.215.02	Curved slider 5
11	16.216.02	Curved slider 6
12	16.217.02	Curved slider 7
13	16.218.02	Curved slider 8
14	16.219.02	Intermediary plate
15	16.220.02	Commanding axle
16	16.223.02	Ratchet
17	16.224.02	Operating slider
18	16.225.03	Switch lever
19	16.228.02	Stop spring
20	91.030.51	Safety washer 3,2 DIN

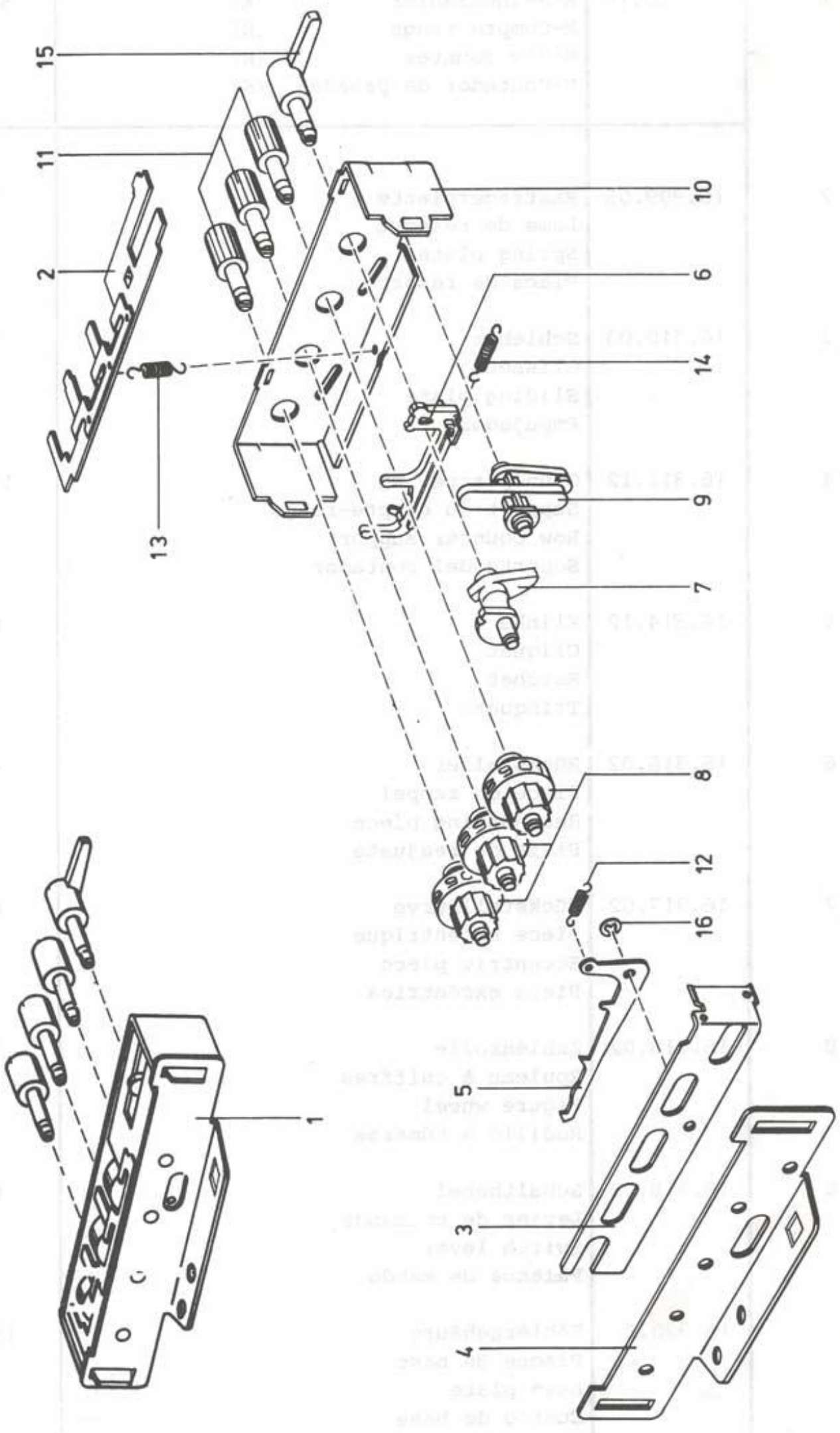




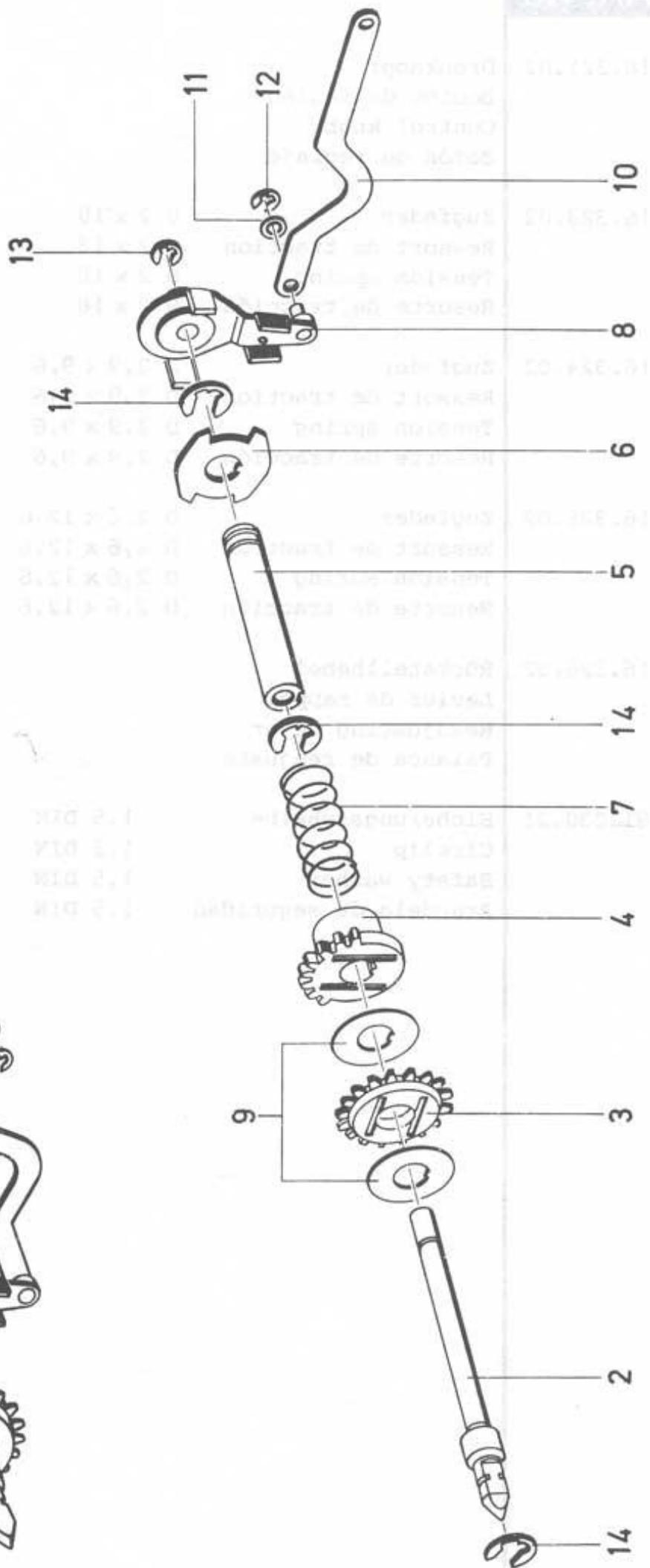
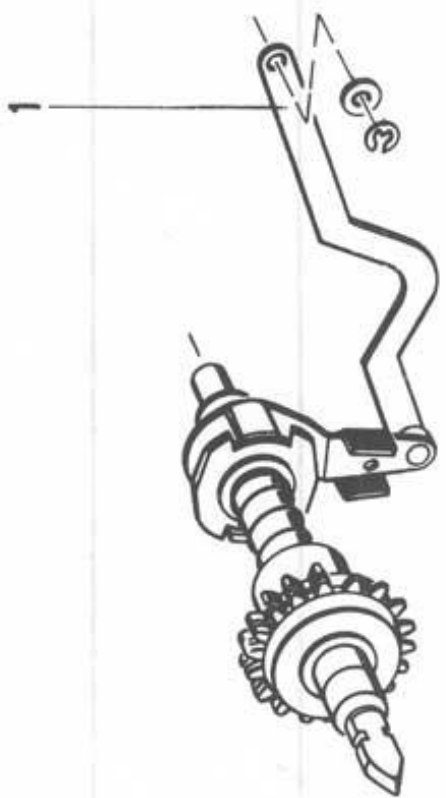
1	16.250.01	VM Key support front
2	16.251.01	VM Key support back
3	15.292.02	Tension spring D 4,2 x 17
4	16.260.03	Key support front
5	16.261.03	Key support back
6	16.267.02	Catch left
7	16.268.02	Catch right
8	16.269.02	Holding ratchet left
9	16.270.02	Holding ratchet right
10	16.271.03	Lever
11	16.274.03	Key slider
12	16.277.03	Switch lever
13	16.279.02	Butt strap
14	90.765.92	Washer D 4,2 / 10 x 1
15	90.767.71	Washer D 3,2 / 7 x 0,8
16	91.030.41	Safety washer 2,3 DIN
17	91.030.51	Safety washer 3,2 DIN



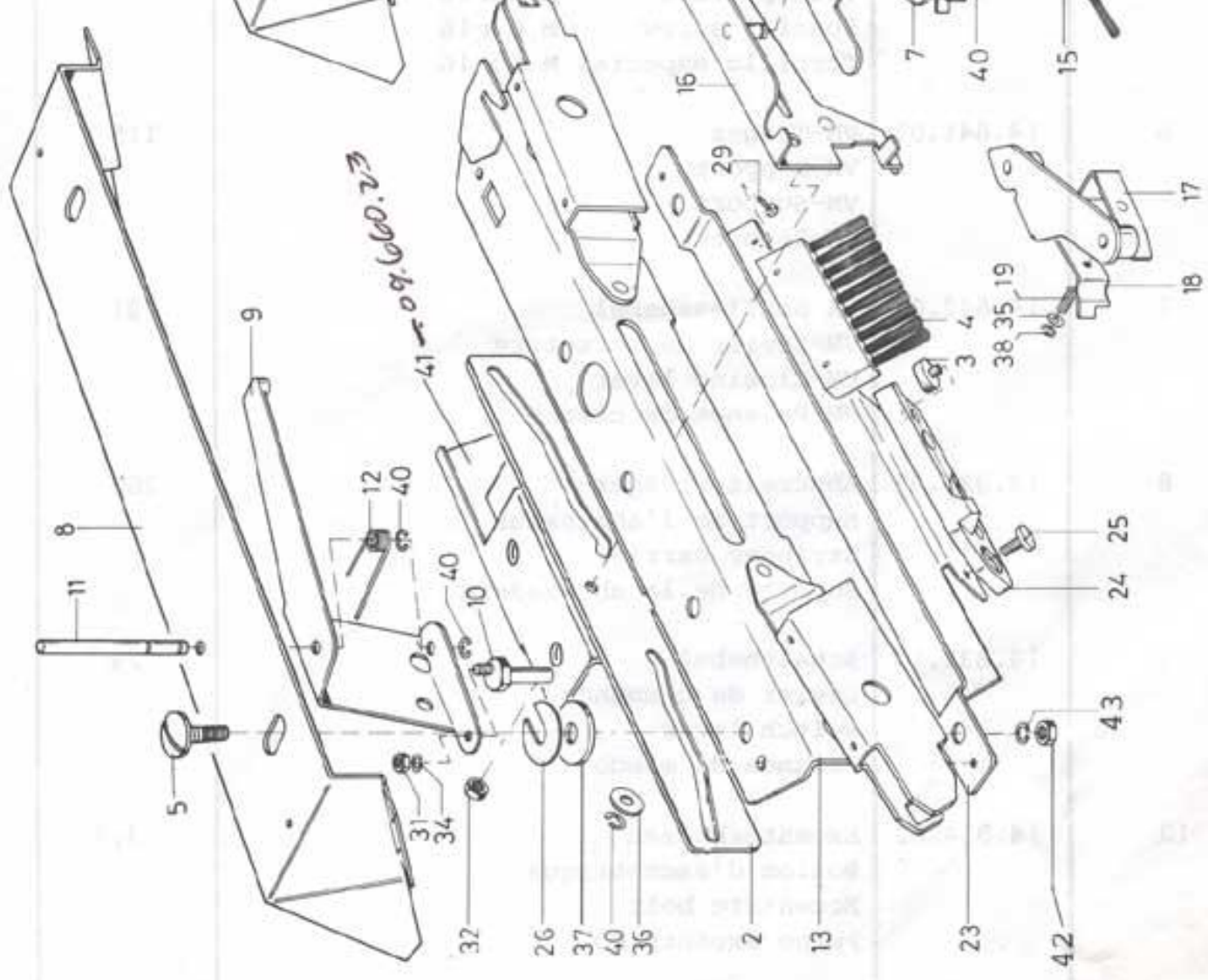
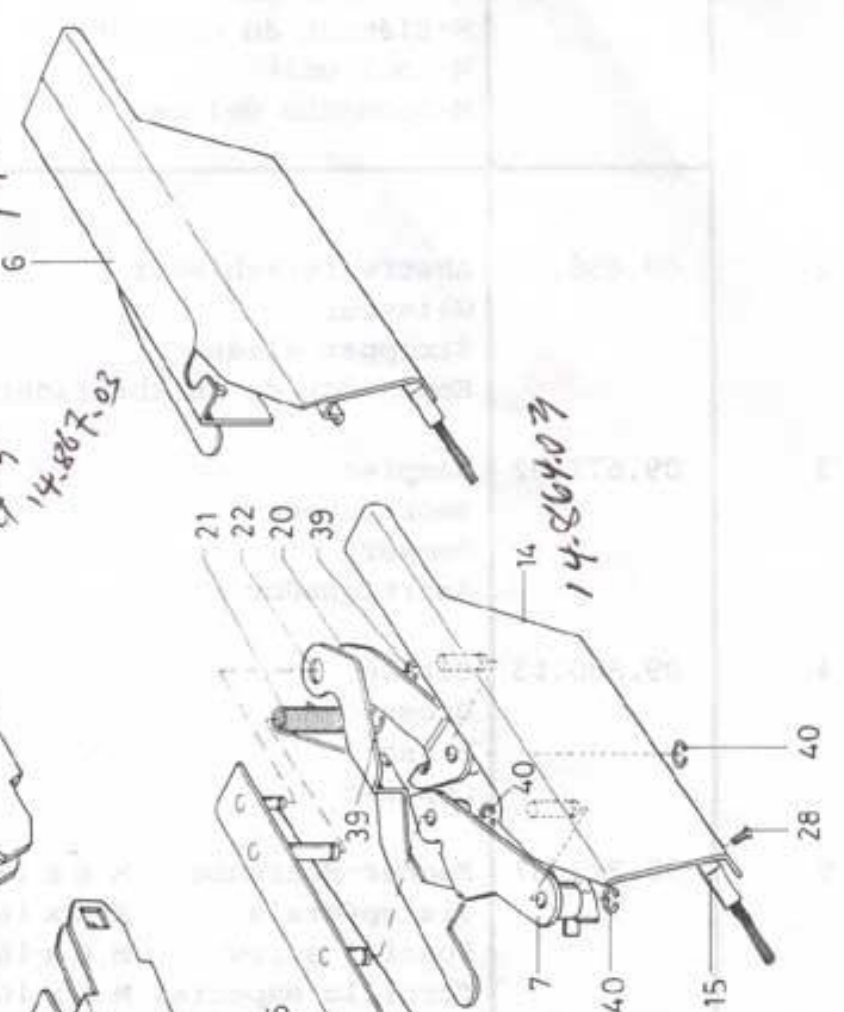
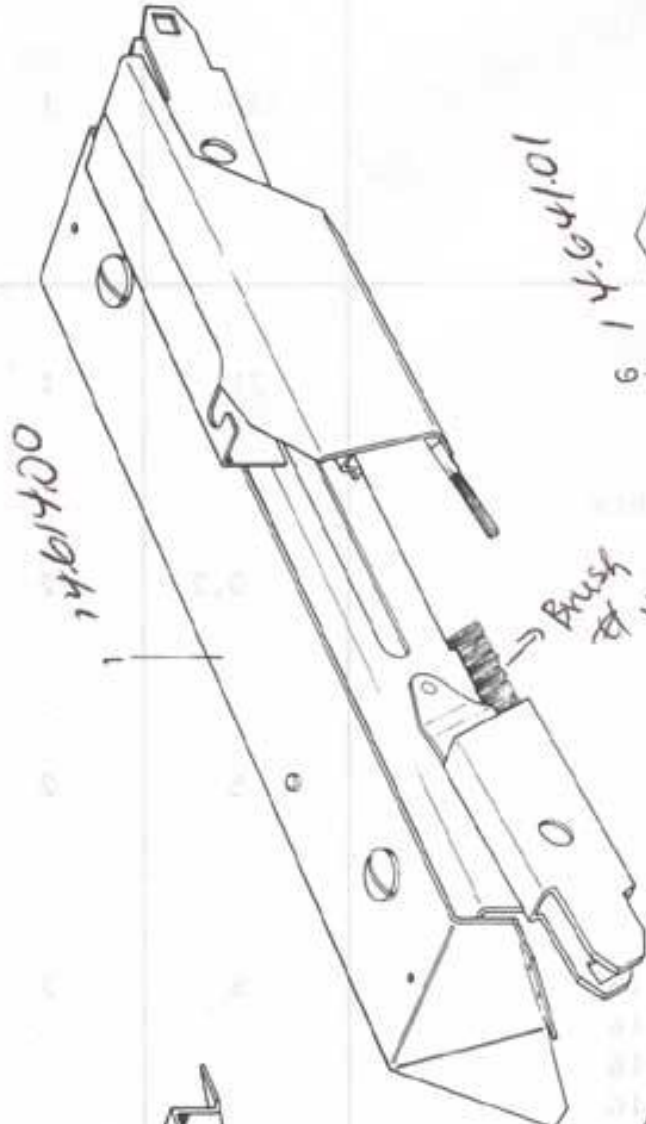
1	05.115.01	VM Adjustment support white
2	09.580.02	Axle
3	16.125.03	Adjustment support
4	16.127.03	Cam disc
5	16.130.02	Adjustment lever
6	16.147.02	Pressure spring D-11 x 9
7	05.173.02	Adjustment disk white
8	90.350.01	Parker screw D 2,2 / 12 x 1
9	90.766.51	Distance washer D 5,2 / 12 x 1



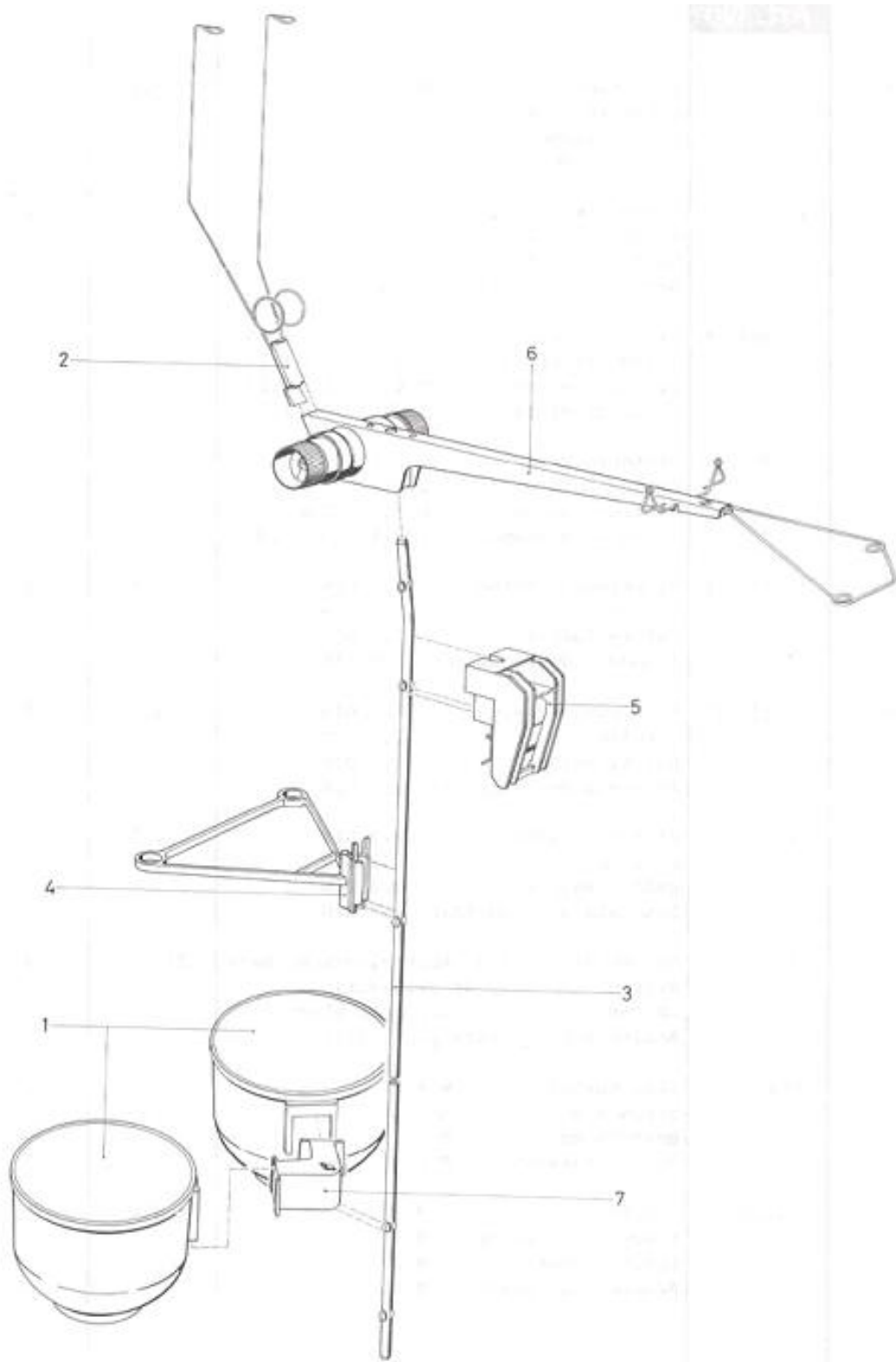
1	16.300.10	M Row counter K
2	16.309.03	Spring plate
3	16.310.03	Sliding plate
4	16.311.12	Row counter support
5	16.314.12	Ratchet
6	16.316.02	Readjusting piece
7	16.317.02	Eccentric piece
8	16.318.02	Figure wheel
9	16.319.02	Switch lever
10	16.320.02	Base plate
11	16.321.02	Control knob
12	16.623.02	Tension spring D 2 x 18
13	16.324.02	Tension spring D 2,9 x 9,6
14	16.325.02	Tension spring D 2,6 x 12,6
15	16.326.02	Readjusting lever
16	91.030.31	Safety washer 1,5 DIN



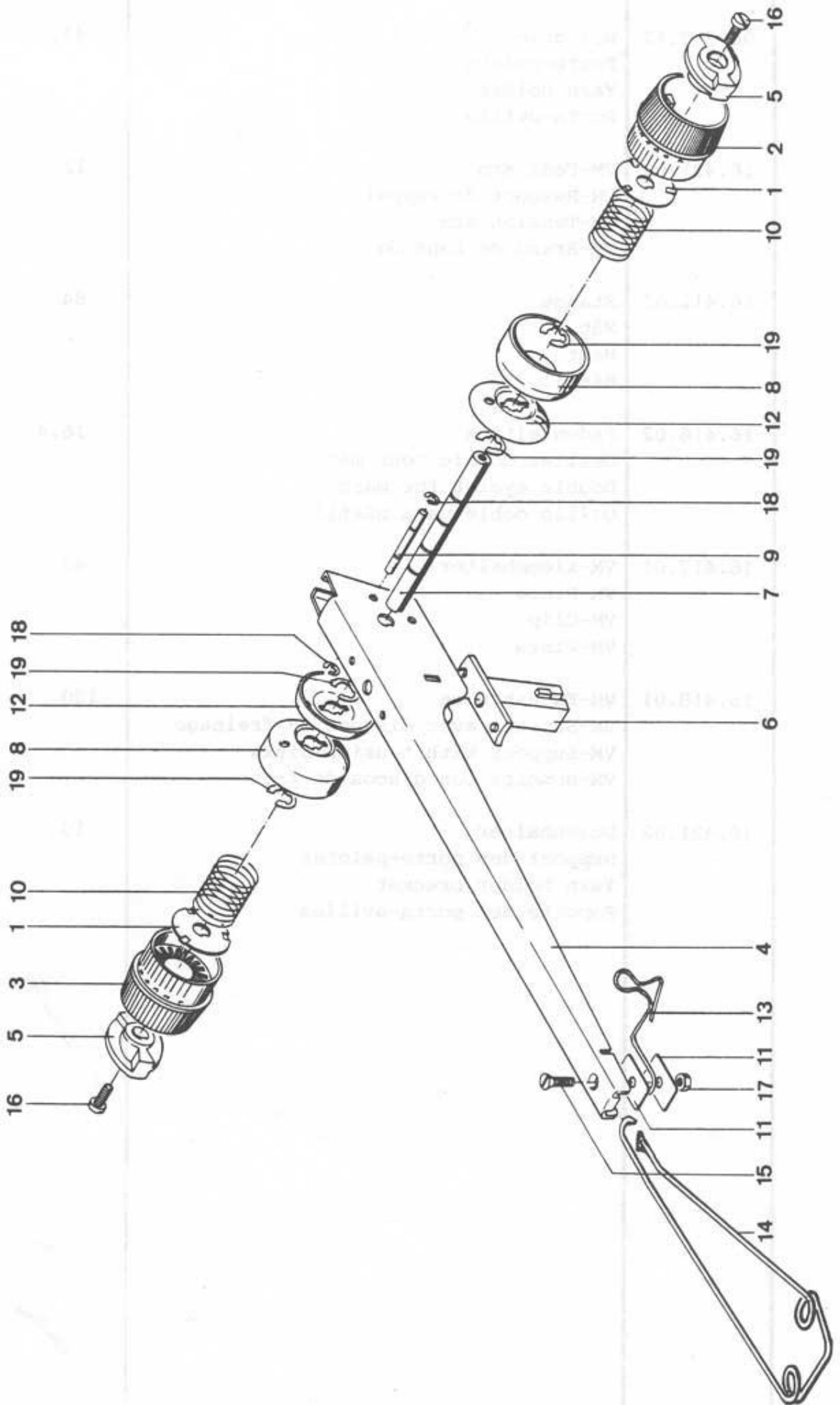
1	09.067.51	VM Drive of feeding eyelet
2	09.701.22	Drive shaft
3	09.702.22	Auxiliary wheel
4	09.705.12	Driving wheel
5	09.706.22	Driver sleeve
6	09.707.32	Driver plate
7	09.708.22	Pressure spring D 10 x 26
8	09.709.23	Crank lever
9	09.711.02	Sliding disc
10	09.712.02	Push rod
11	90.765.12	Washer D 2,6 / 6 x 0,2
12	91.030.31	Safety washer 1,9 DIN
13	91.030.51	Safety washer 3,2 DIN
14	91.030.81	Safety washer 6 DIN



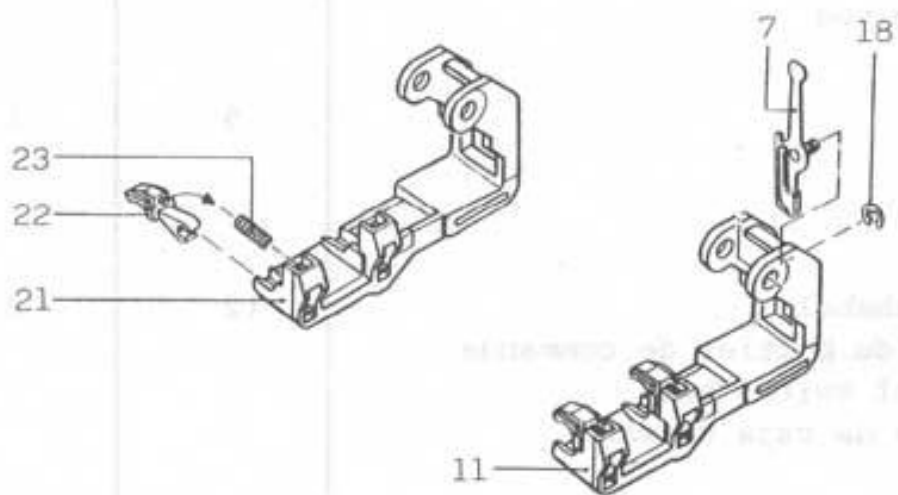
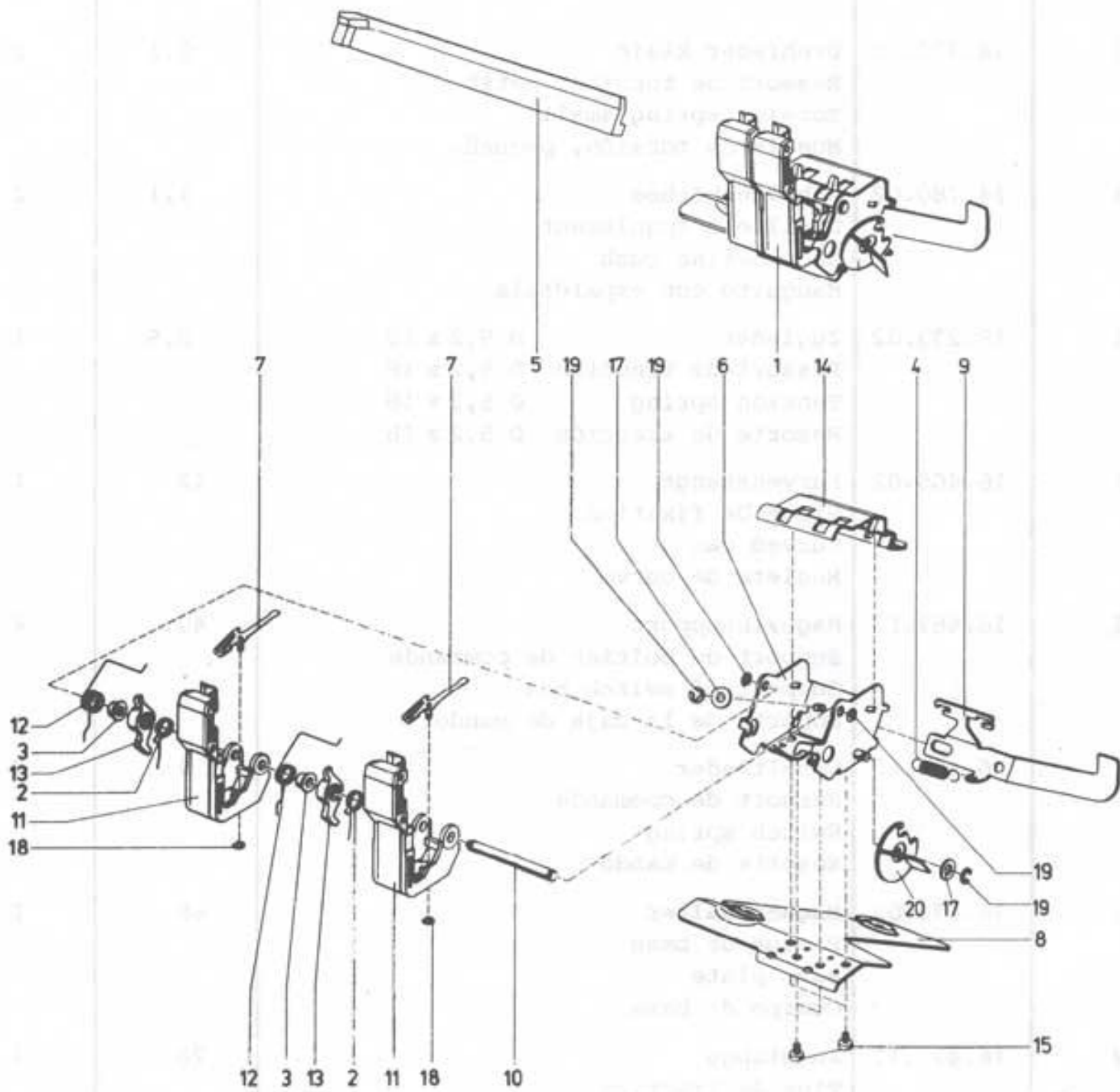
1	14.614.00	M Lock unit
2	09.658.12	Stripper slider
3	09.677.02	Damper
4	09.680.13	Brush
5	90.223.87	Special screw M6 x 16
6	14.641.01	VM Support
7	14.642.01	VM Closing lever
8	14.825.03	Stripper carrier
9	14.831.13	Switch lever
10	14.834.02	Eccentric bolt
11	14.837.02	Axle
12	14.838.02	Torsion spring
13	14.841.13	Stripper plate
14	14.864.03	Brush holder front
15	14.867.03	Brush - COLOR
16	14.871.03	Carrier
17	14.877.03	Closing lever
18	14.881.02	Support
19	14.882.02	Pressure spring d 4 X 6,4
20	14.884.03	Lever
21	14.888.02	Torsion spring
22	14.889.02	Auxiliary lever
23	14.899.12	Brush holder back
24	14.901.02	Face cam
25	14.903.02	Special screw M3
26	14.912.02	Distance washer D 6,4 / 18 x 0,2
28	90.330.01	Countersunk tin screw D 2,2 x 6,5
29	90.350.01	Parker screw D 2,2 x 6,5
31	90.605.53	Hexagon nub M4
32	90.632.47	Sleeve nut M4
34	90.700.51	Spring washer M4
35	90.750.02	Washer D 2,6 / 6,5 x 0,5
36	90.769.14	Distance washer D 4,2 / 10 x 1,25
37	90.767.24	Distance washer 7,1 / 18 x 2,0
38	91.030.31	Safety washer 1,9 DIN
39	91.030.41	Safety washer 2,3 DIN
40	91.030.51	safety washer 3,2 DIN
41	09.660.23	Driver for stripper slider
42	90.605.72	Hexagon nut M6
43	90.700.71	Spring washer M6



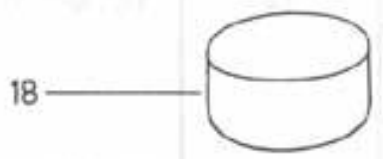
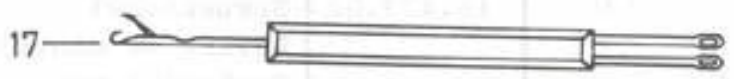
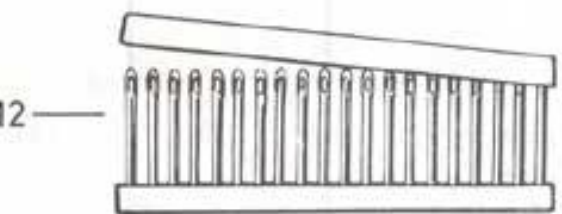
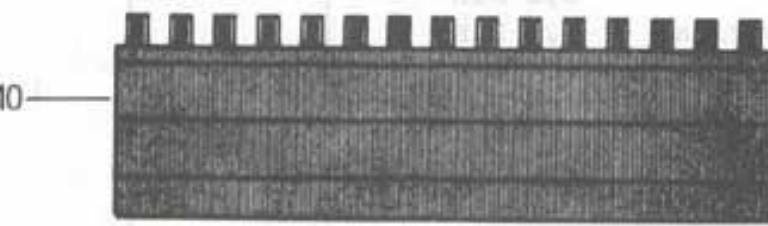
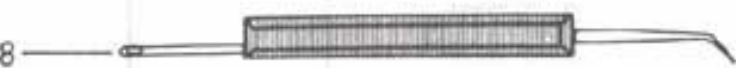
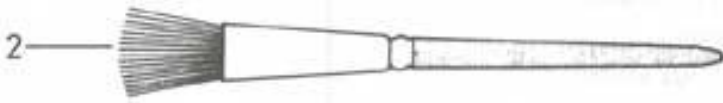
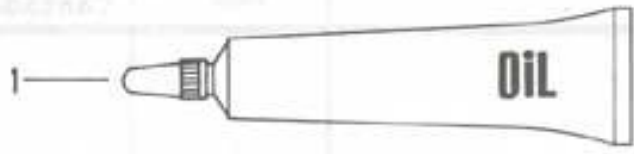
1	08.292.12	Yarn holder
2	16.401.01	VM Tension arm
3	16.412.02	Mast
4	16.416.02	Double eyelet for mast
5	16.417.01	VM Clip
6	16.418.01	VM Support with tension disks
7	16.421.02	Yarn holder bracket



	16.418.01	VM Support with tension disks
1	14.970.02	Notched disk
2	15.752.02	Adjustment knob right
3	15.753.02	Adjustment knob left
4	15.754.02	Support
5	15.755.02	Curved disk
6	15.756.02	Holder for support
7	15.761.12	Axle D 6 x 66,4
8	15.762.02	Brake disk
9	15.764.02	Axle D3 x 26
10	15.766.02	Pressure spring D 16,7 x 15
11	15.769.02	Intermediary plate
12	15.770.02	Brake Disk
13	16.402.22	Eyelet of support
14	16.403.02	Double front eyelet
15	90.302.31	Countersunk screw M3 x 8
16	90.428.01	Cylinder screw M3 x 8
17	90.600.57	Hexagon nut M3
18	91.030.31	Safety washer 1,9 DIN
19	91.030.71	Safety washer 5 DIN



1	16.460.00	M Switch box
2	14.779.02	Torsion spring small
3	14.780.02	Shouldering bush
4	15.233.02	Tension spring D 5,2 x 18
5	16.465.02	Curved cam
6	16.467.13	Support of switch box
7	16.468.13	Switch spring
8	16.470.02	Base Plate
9	16.472.12	Connecting rod
10	16.474.02	Axle
11	16.488.11	VM Lever of switch box
12	16.476.02	Torsion spring large
13	16.477.02	Control lever
14	16.480.02	Cover
15	90.412.01	Cylinder screw M3 x 4
17	90.765.92	Distance washer D 4,2 / 10 x 1
18	91.030.41	Safety washer 2,3 DIN
19	91.030.51	Safety washer 3,2 DIN
20	16.481.02	Ratchet disk
21	16.485.12	Lever of switch box
22	16.486.02	Clamp
23	16.487.02	Pressure spring D 3,5 x 9,5



21 —

	N		BX
	CX		BX
	DX		EX
	HX		FX
	AX		GX

1	03.025.02	Tube of Bellodor Oil
2	07.306.22	Dust brush
3	09.232.12	Latch needle
3	09.965.02	Latch needle nickel plated
4	09.233.02	Pusher
4	09.966.02	Pusher nickel plated
5	09.720.23	Stripper orange
6	09.735.40	Stripper black
8	09.802.03	Orange tool
9	09.803.03	Black tool
10	09.809.02	Pattern ruler 1:1
11	09.816.12	Clamp
12	09.823.02	Deckercomb 20 needles
16	09.941.02	Double ended bodkin
17	09.942.03	Yellow tool
18	09.963.05	Paraffin wax
19	14.637.01	VM Feeding eyelet
	16.070.11	VM Accessories for DM80 plastic bag
20	16.086.12	Trip can for row counter
	16.093.21	VM Packing box
	33.253.91	Instruction book, English DM80 Pas sap
21	33.253.93	Diagram DM80 English